



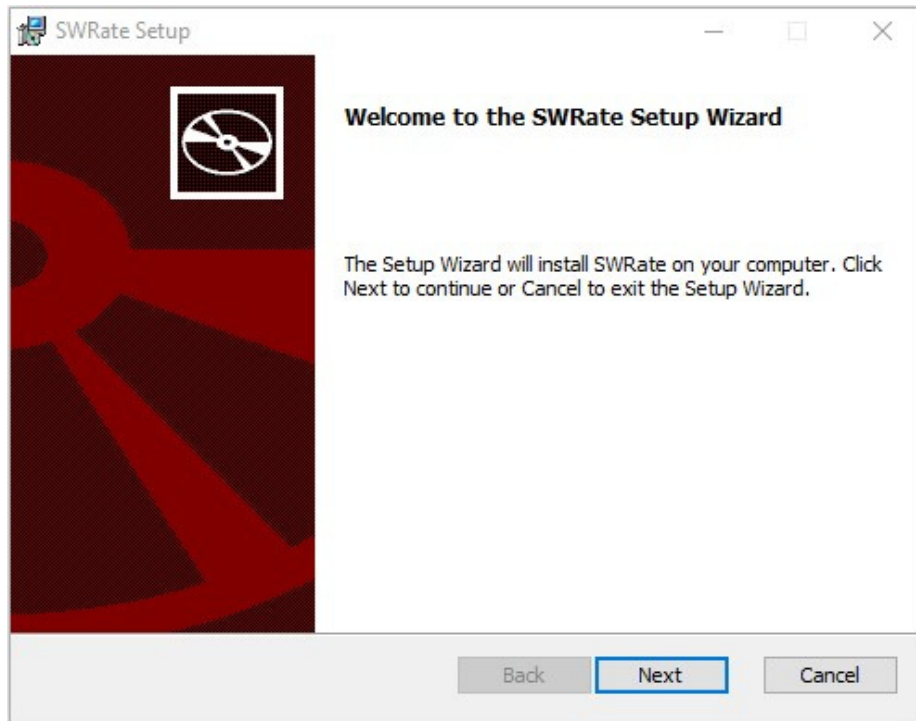
SWRate Installation Instructions

1. After downloading the SWRate installer, double-click the “*SWRate_install.msi*” file to begin installing SWRate software.

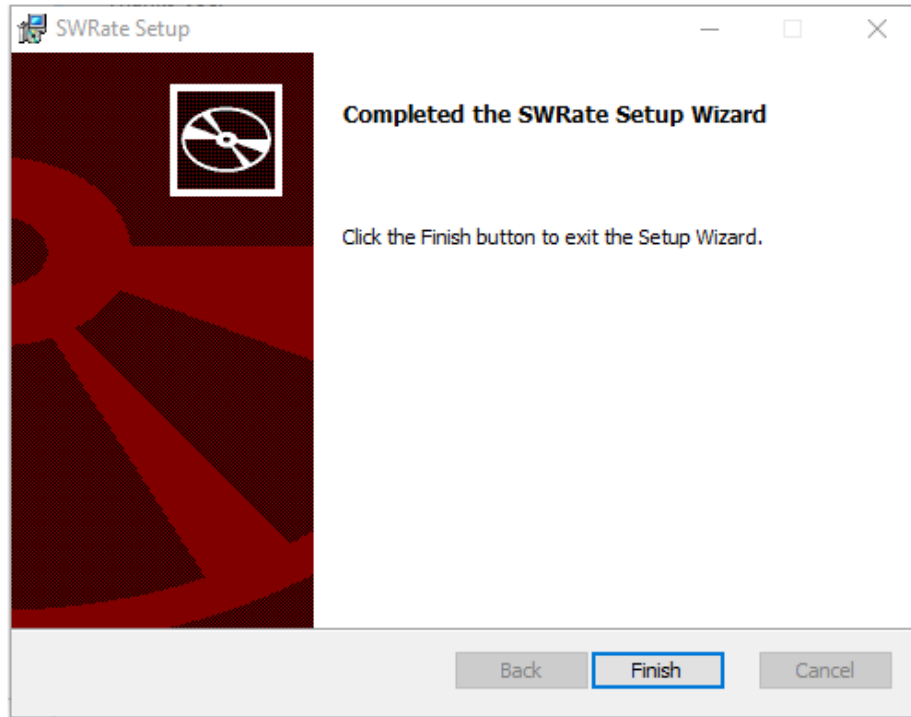


SWRate_install.msi

2. Click **Next** on the **Welcome to the SWRate Setup Wizard** screen.



3. By default, the SWRate program will be installed under the “*C:\Program Files (x86)\Southwire\SWRate*” folder.
4. Click **Finish**.



5. To launch the SWRate program, either double-click the Desktop shortcut or search "SWRate" in the Start menu.



SWRate Pro Licensing

If you have purchased SWRate Pro software, you will need to enter a valid product key to activate the full version of the software with **Advanced** features. To do so, click **Upgrade to Pro** at the top of the SWRate **Main Menu** screen after opening the program (Contact OHT@southwire.com for a product key).

1. In the **Southwire Licensing** screen, enter your **Product Key** in the space provided.

Southwire Licensing

License Acquisition

Product Key

YOUR_PRODUCT_KEY

License Source

Internet

Use Proxy Service

Configure Proxy Service

Email

Checkout

License Information

Status

Unlicensed

Expiration

N/A

Machine Identifier

:87:675319;23289;9753

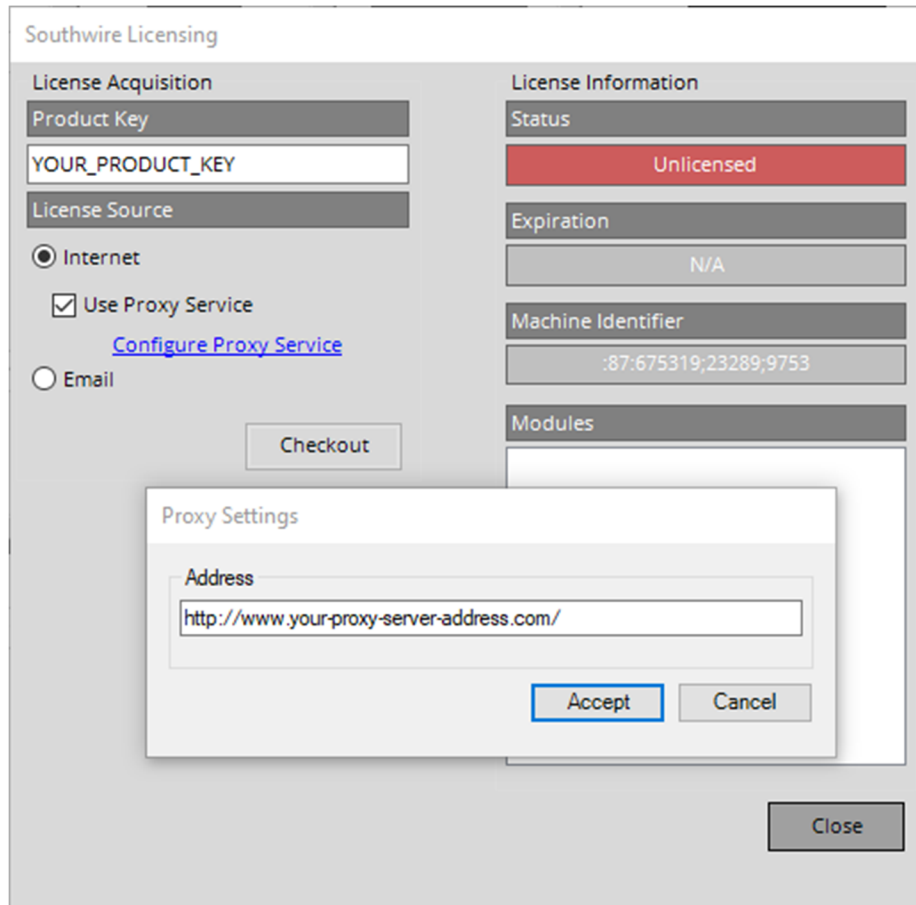
Modules

Close

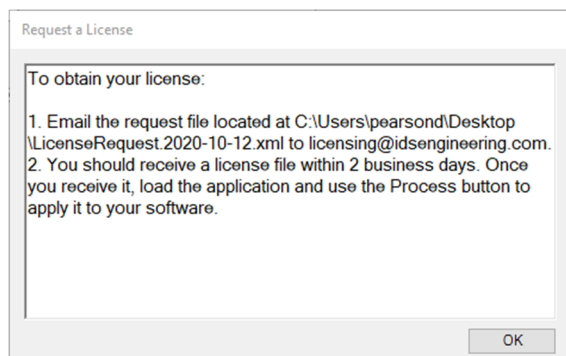
2. By default, the **License Source** will be set to **Internet**. If you do not have a valid internet connection, you may choose the **Email** option.
 - a) If you choose **Internet** and **DO NOT** use a proxy service, proceed to Step 3 below.
 - b) If you choose **Internet** and need to use a proxy service, check the box beside **Use Proxy Service** and click Configure Proxy Service.

Next, enter your proxy server address and click **Accept**.

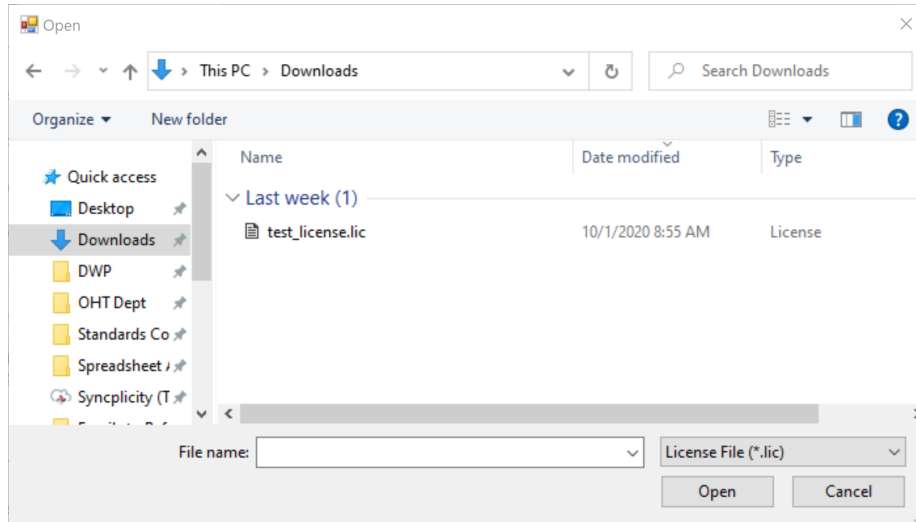
Finally, proceed to Step 3 below.



- c) If you choose **Email**, you will need to request a license file.
 - i. Click the **Request** button.
 - ii. You will be prompted to select a folder under which to save the license request file (Ex: filename "LicenseRequest.YYYY-MM-DD.xml" will be generated).
 - iii. Click **OK**.
 - iv. A window will appear with instructions on where to email the previously generated license request file.



- v. When you receive the license file from Southwire, reopen the program and click **Upgrade to Pro** at the top of the **Main Menu** screen. Within the **Southwire Licensing** screen, again click **Email** under **License Source**, then click the **Process** button to apply the license file. You will need to navigate to the folder where the license file is located (Ex: "test_license.lic") and click **Open**. If successful, proceed to Step 4.



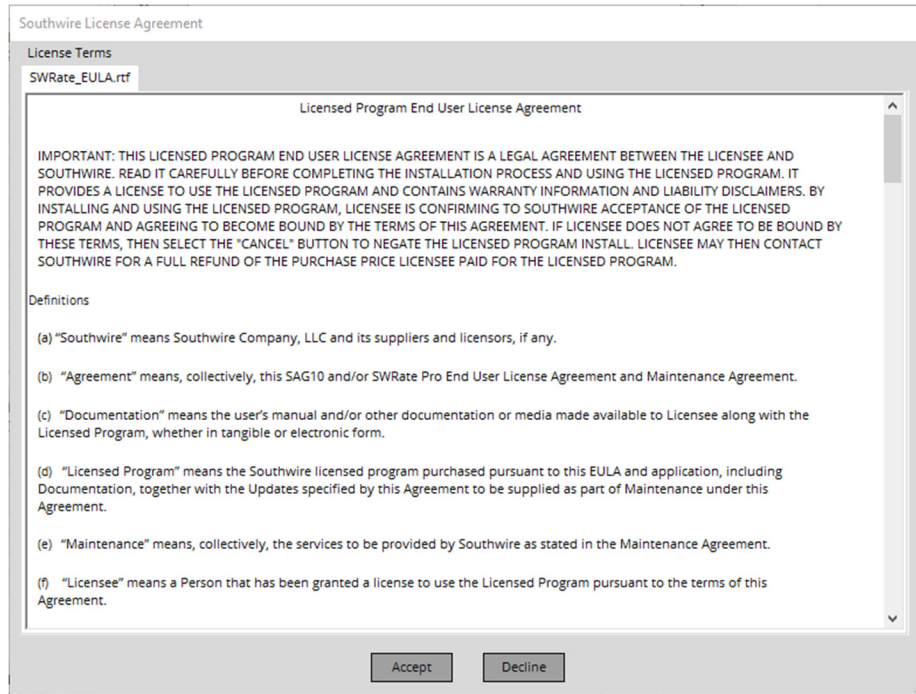
3. Click the **Checkout** button.
4. Once a license is successfully checked out, the **Status** section of License Information will be updated to say **Licensed** and will be visibly green.



Southwire Licensing

License Acquisition	License Information
Product Key	Status
YOUR_PRODUCT_KEY	Licensed
License Source	Expiration
<input checked="" type="radio"/> Internet	NEVER
<input type="checkbox"/> Use Proxy Service	Machine Identifier
Configure Proxy Service	:87:675319;23289;9753
<input type="radio"/> Email	Modules
<input type="button" value="Checkout"/>	
	<input type="button" value="Close"/>

5. Click **Close**.
6. You will be prompted with the SWRate End User License Agreement (EULA) and will need to click **Accept** or **Decline**.



7. Upon acceptance of the EULA, the program will reload, and you will be able to use the SWRate Pro program.

