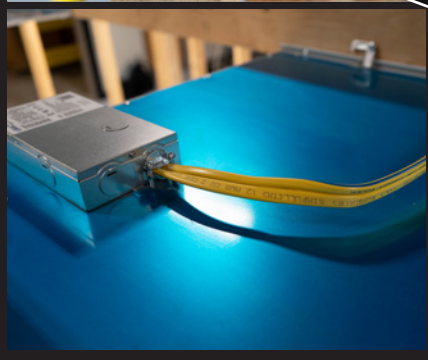




Southwire®

0-10V PRODUCTS



TWO FUNCTIONS IN ONE CABLE



Romex® Brand SIMpull® NM-B-PCS Duo™ Cable

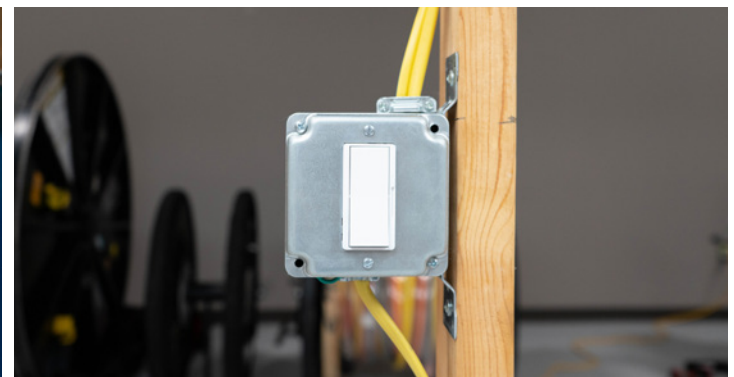
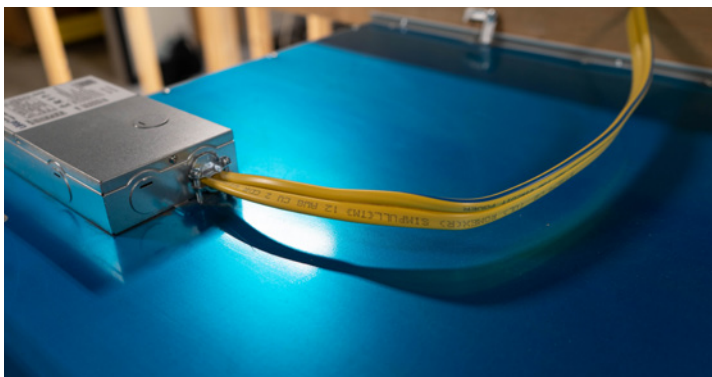
Romex® Brand SIMpull® NM-B-PCS Duo™ Cable combines power conductors along with control/signal cables all under one jacket, saving time and money compared to traditional installations of two cables. Romex® Brand SIMpull® NM-B-PCS Duo™ Cable is ideal for use with LED or fluorescent dimming controls and SMART homes.

Features:

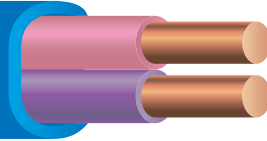
- Compliant with NEC Article 334 (NM Cables) and the circuit separation requirements of NEC 725.136(I) for power/lighting conductors and Class 2/Class 3 conductors
- UL listed per UL 719
- Solid copper conductors
- Color coded PVC jacket with SIMpull® technology
- Class 2/Class 3 control/signal component with light blue jacket, purple and pink conductors

Benefits:

- For use in one and two-family dwellings
- For use in multi-family dwellings where type NM-B cable is allowed by NEC
- Can be installed behind walls or in ceiling
- Reduces installation cost when compared to pulling separate power and control/signal cables
- All cables under one jacket decreases the likelihood of damage
- SIMpull® cable jacket
- Conductors identification is printed directly on the jacket



RESIDENTIAL CABLES



64350501

Romex® Brand SIMpull® Control and Signal Cable

Romex® Brand SIMpull® Control and Signal Cable is a UL listed Class 2 cable for indoor use and designed for 0-10V dimming control of LED or fluorescent lighting in residential applications. Engineered with SIMpull® technology, Romex SIMpull® Control and Signal Cable is the safe, NEC compliant answer to your residential lighting control needs.

Features:

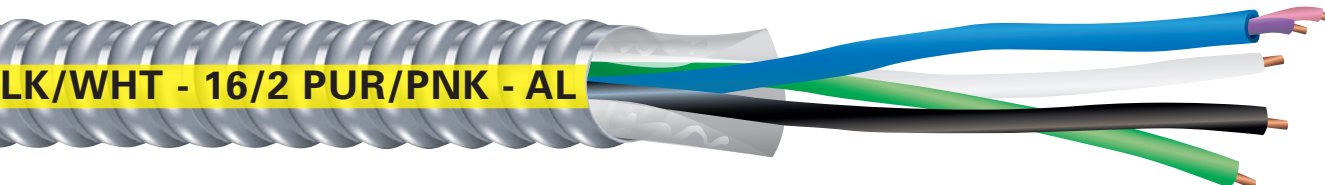
- NEC compliant for indoor use
- UL listed to UL 13
- Flame retardant per FT4 Vertical Tray Flame Test
- Type CL2
- 16AWG Solid copper conductors
- Purple and pink conductors for control/signal applications
- Light blue PVC jacket with SIMpull® technology
- 150V rating per NEC Article 725 (CAUTION): Do not use this cable to make connections to 120V AC line voltage

Benefits:

- For use in one and two-family dwellings
- For use in multi-family dwellings where Type NM-B cable is allowed by NEC
- For use in any 0-10v residential dimming controls of LED or fluorescent lighting
- SIMpull® jacket allows for easier pulling
- Suitable for Class 2 wiring applications



POWER AND CONTROL/SIGNAL CABLE UNDER ONE ARMOR



MC-PCS Duo™ Cable

Southwire's new MC-PCS Duo™ Cable combines power conductors along with Control/Signal cables all under one armor, saving you time and money. MC-PCS Duo™ Cable is ideal for use with LED or fluorescent dimming controls and SMART buildings.

Features:

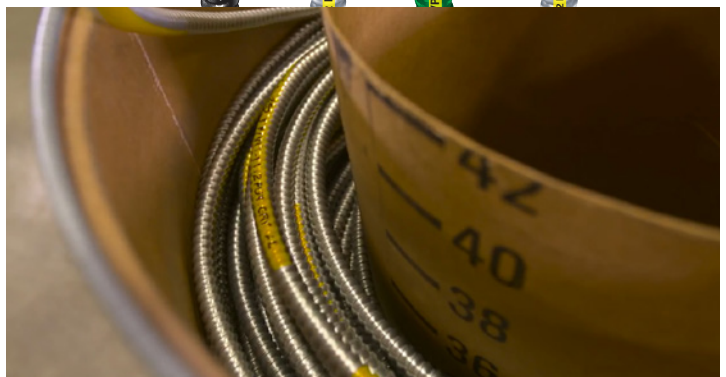
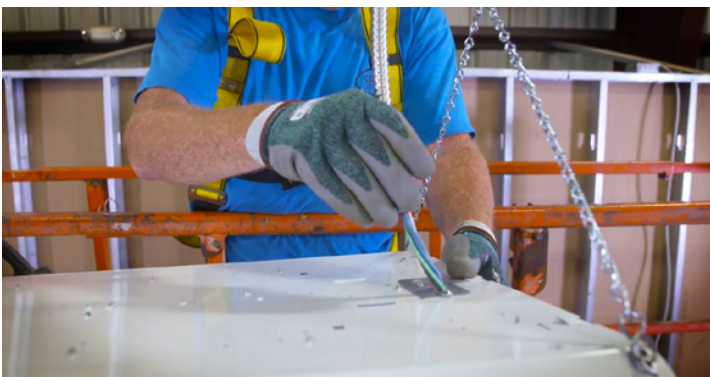
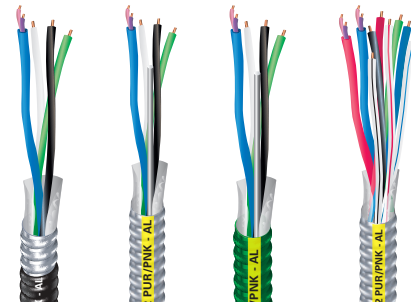
- Compliant with UL 1569 and NEC Articles 330 and 725
- Solid or stranded conductors
- Aluminum or steel armor
- Available with overall PVC jacket

Benefits:

- Reduces installation costs when compared to pulling separate power and control/signal/data cables
- All cables under one armor decreases the likelihood of damage – eliminating costly callbacks for troubleshooting and repair
- Circuit identification is printed directly on the armor or jacket

Additional MC-PCS Duo™ Cable Variations:

- MC-PCS Duo™ PVC Jacketed Power & Control/Signal Cable
- MC^{AP} PCS Duo™ Power & Control/Signal Cable Type MC All Purpose
- MC-PCS HCF Duo™ Power & Control/Signal Cable for Healthcare Facilities
- MC-PCS Duo™ 2 Zone Power & Control/Signal Cable



COMMERCIAL CABLES

SIMpull® Control and Signal Cable

Southwire's SIMpull® Control and Signal Cable is a UL listed 600v rated control cable intended for installation inside conduit along with 600v power conductors. Note- please review with local inspector before installing this product inside conduit with power conductors and contact Southwire (cabletechsupport@southwire.com) if there are questions regarding NEC compliance.

- SIMpull® jacket technology for easier pulling
- Light blue PVC jacket with purple and pink 16 stranded copper TFFN conductors
- Overall jacket thickness meets NEC 725.136(I) requirements for separation between power and control/signal conductors

SIMpull® PCS Cable

SIMpull® PCS Cable is a 600v rated plexed conductor assembly containing both power and control/signal conductors in a single unjacketed construction. It is designed as a 0-10v PCS solution in applications where installation in conduit is required. Each component within the assembly is UL listed, and the overall construction meets NEC 725.136(I) requirements for separation between power and control/signal conductors. Note- Please review with the local inspector before using this product and contact Southwire (cabletechsupport@southwire.com) if there are questions regarding NEC compliance.

- SIMpull® jacket on both power and control/signal components for easier pulling
- Power and control components cabled on one reel reduce setup time, effort and installation costs compared to separate reels
- Alternative to MC-PCS where rigid conduit is specified or required
- 600V rated
- Light blue control/signal cable with purple and pink conductors to maintain polarity of control wiring
- Customized constructions to meet jobsite requirements

SPECIAL APPLICATION CABLES



P41614 and P51641

Low Voltage Plenum Commercial Grade Products

Southwire's Low Voltage Dimming Cable is Plenum rated and intended for commercial buildings and purposed for luminaire applications. This Control/Signal cable is ideal for LED or Fluorescent dimming controls and SMART buildings.

Features:

- Compliant with NFPA 262 (former UL 910)
- Compliant with UL 444, NEC Article 800 and CSA C22.2 by C(UL)
- Stranded Copper Conductors
- Available in 16 AWG or 18 AWG
- Special Purple/Pink Color Code under Low Smoke PVC Jacket
- 300V rated

Benefits:

- For use in Commercial Buildings
- Can be installed above drop ceilings and other spaces used for air handling or ventilation
- Tri-Listed CMP/CL3P/FPLP for multiple applications



H91834-1A

Lutron Compatible Products

Southwire's Special Application Lutron Compatible Products are manufactured in strict accordance with Lutron Electronics Co., Inc.'s specifications for select Lutron Systems, including Lighting Control.

Features:

- Manufactured with Lutron specific jacket and conductor color code
- Plenum and Non-Plenum constructions available

Benefits:

- For use in both Commercial and Non-Commercial Buildings
- Shade and Energy Management Constructions also available

HAND TOOLS USED IN 0-10V CABLE INSTALLATIONS

Made in USA Wire Strippers - Wounded Warrior Project®

- Double-dipped grip for comfortable fit
- Serrated nose holds cable for easy twisting and pulling
- Spring-loaded for self-opening action

 **WE'VE GOT IT
MADE IN AMERICA™**



S1018SOL-WW

S1020SOL-WW

Made in USA Pliers - Wounded Warrior Project®

- Hot riveted pivot joint for smooth action
- Induction hardened
- Hand sharpened blades
- Drop forged USA steel for durability

 **WE'VE GOT IT
MADE IN AMERICA™**



SNM1214HH-WW

SCP9TPCD-WW

DCPA8D-WW

ROTO-SPLIT® Cutters - Wounded Warrior Project®

- Cuts or strips any armored cable from AWG 14/2 to 10/4, including AC MC, BX, & HCF
- Cuts 3/8" trade size Flex
- Stores up to 6 extra blades in handle knob
- Durable die cast epoxy-enameled body

 **WE'VE GOT IT
MADE IN AMERICA™**



RS-101A-WW

Multi-Tool Pliers

- Grip, strip, crimp, ream, shear, and cut
- Narrow knurled jaw allows access to tight spaces
- Cuts small gauge copper wire and communication cables
- Crimps common size wire ferrules
- Easily strips 10-14 AWG solid wire
- Durable forged construction for lasting performance
- Comfortable grips minimize hand wear and fatigue
- Strips:

- S7N1HD: 10-14 AWG Solid, 12-16 Stranded
- S816SOLHD: 8-16 AWG Solid, 10-18 Stranded
- SNM1214HD: 12/2 and 14/2 Romex



S7N1HD

S816SOLHD



12-in-1 Multi-Bit Screwdriver

- Precision-machined, quick change bits for driving hex, Phillips, slotted, and square head screws
- Handles 3/16", 1/4", 5/16" slotted; #1, #2, #3 Phillips; #1, #2, square recessed; and 1/4", 5/16", 3/8", 1/2" hex drive
- Cushion grip handle provides extra comfort and maximum torque
- Premium chrome-plated shaft is durable as well as rust and corrosion resistant
- Meets ANSI/ASME specifications



SD12N1





Southwire®

**0-10V
PRODUCTS**

GET SOCIAL WITH US:



[/SOUTHWIRE](#)



[/SOUTHWIRE-COMPANY](#)



[@SOUTHWIRE](#)



[@SOUTHWIRE](#)

SOUTHWIRE.COM | 1-800-444-1700

All Trademarks or Registered Trademarks (TM/®) are owned or licensed by Southwire Company.
Any other TM/®- Trademark or Registered Trademark of Southwire Company.