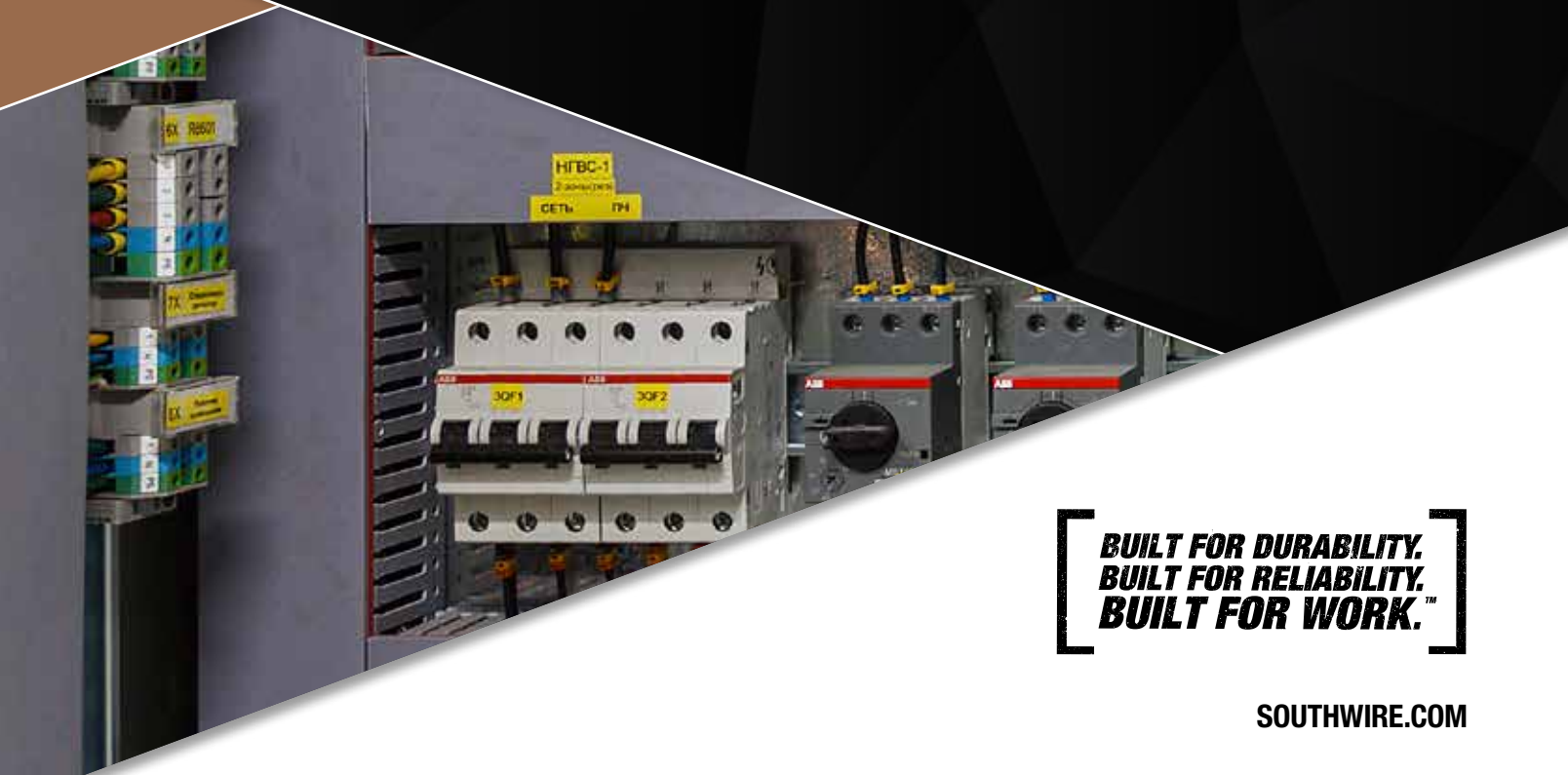




Southwire™

PANEL & BREAKER ACCESSORIES CATALOG



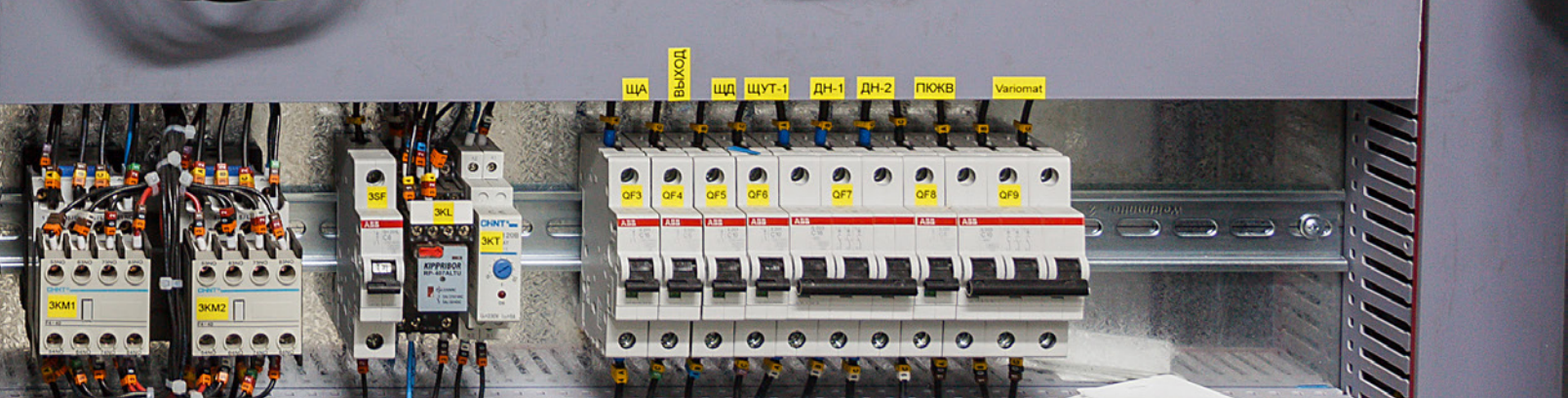
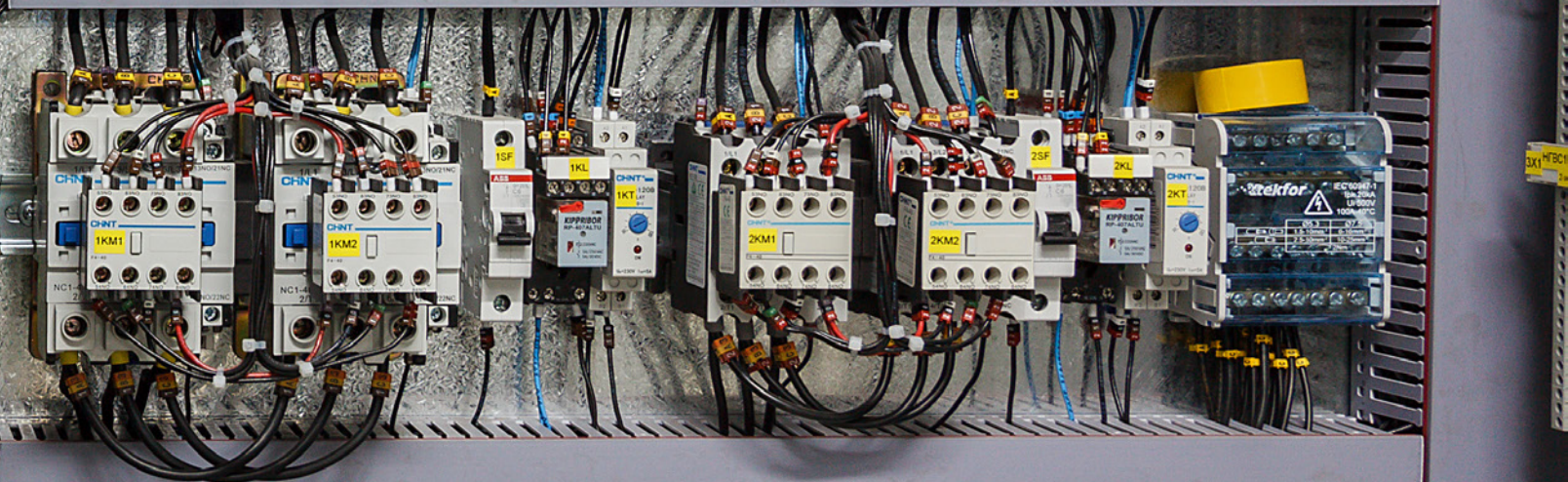
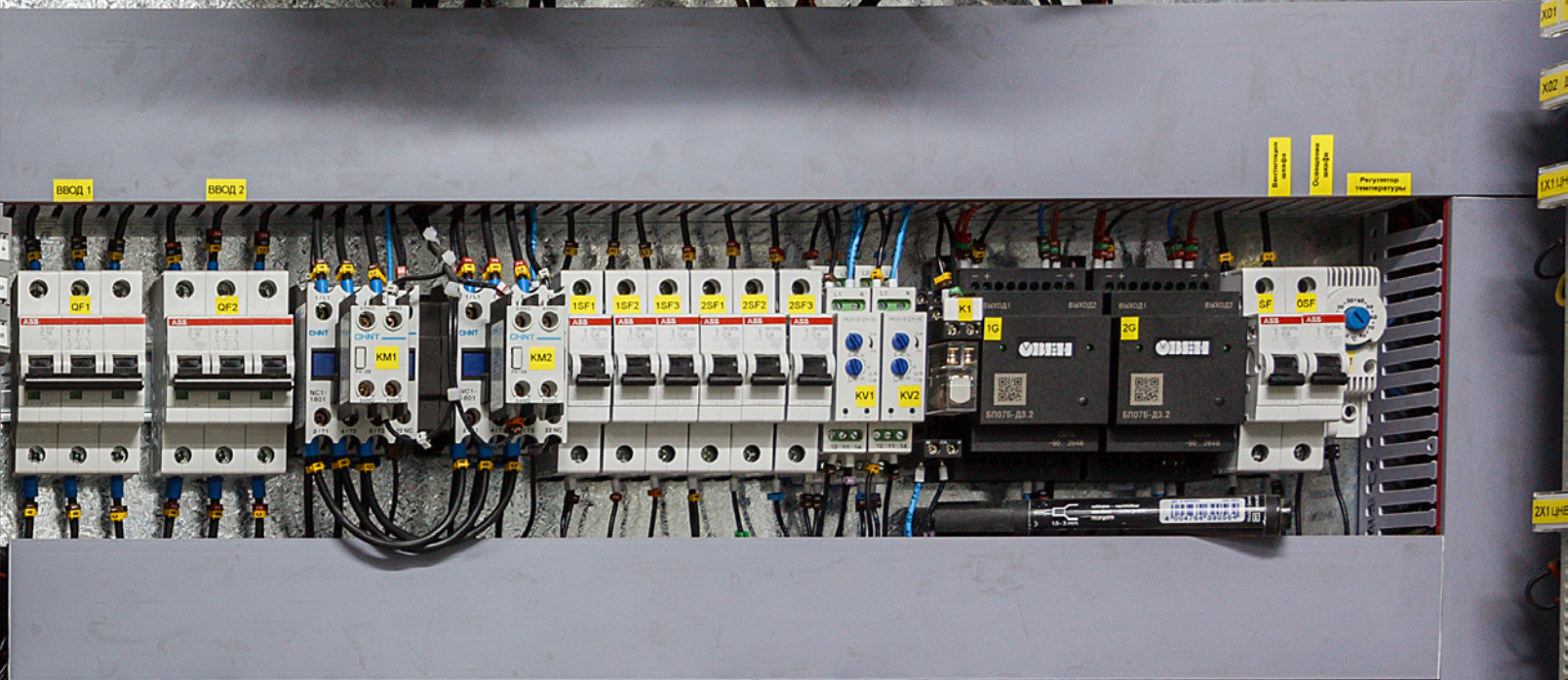
**BUILT FOR DURABILITY.
BUILT FOR RELIABILITY.
BUILT FOR WORK.™**

SOUTHWIRE.COM

PANEL AND BREAKER ACCESSORIES

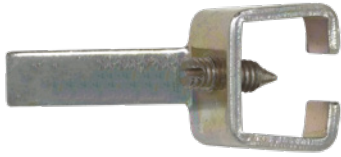
Southwire's products keep our customers
safe and secure from electrical shock in breaker panels.

Breaker Locks
Panel Filler Plates



UNIVERSAL BREAKER LOCKS

ONE POLE



UBL1

FEATURES

- Works with most breaker brands
- US Patent #8,598,477

APPLICATIONS

- Use to secure 2 or 3 pole breakers from being activated

STANDARD MATERIAL

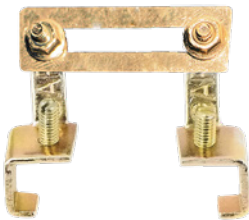
- Steel construction

STANDARD FINISH

- Zinc plated or red NFPA 72, blue powder coat

PART #	FINISH	COMPATIBLE	BREAKER BANDS	MASTER QTY.
UBL1	PLATED	BRYANT, CUTLER HAMMER, GE, ITE, SIEMENS, SQUARE D, ZINSCO, WESTINGHOUSE, T&B, CHALLENGER, EATON		25
UBL1-UPC	PLATED			5 PACK
UBL1-RED	RED			25
UBL1-BLU	BLUE			25

TWO AND THREE POLE



UBL2P

FEATURES

- Bolt on locking bar prevents movement
- Works with most breaker brands
- Steel construction
- Zinc plated
- US Patent #8,598,477

APPLICATIONS

- Use to secure 1-pole breakers from being activated

STANDARD MATERIAL

- Zinc plated

PART #	COLOR	FITS	BREAKER	DESCRIPTION	MASTER QTY.
UBL2P	ZINC PLATED	BRYANT, CUTLER HAMMER, GE, ITE, SIEMENS, SQUARE D, ZINSCO, WESTINGHOUSE, T&B, CHALLENGER, EATON		2 POLE BREAKER	10
UBL3P	ZINC PLATED			3 POLE BREAKER	10

ONE POLE, WITH PADLOCK



UBL2

FEATURES

- Works with most breaker brands
- Brass key-lock included
- .059" thick steel construction
- NFPA 72 red powder coat
- Meets NEC 760.4(B)
- US Patent #8,598,477

APPLICATIONS

- Use to secure 1-pole breakers from being activated

PART #	COLOR	INCLUDES KEYS	COMPATIBLE BREAKER BRAND	MASTER QTY.
UBL2	RED	INDEPENDENT	BRYANT, CUTLER HAMMER, GE, ITE, SIEMENS, SQUARE D, ZINSCO, WESTINGHOUSE, T&B, CHALLENGER, EATON	1

1" AND 3/4" BREAKER FILLER PLATE

NO SLIP DESIGN



BF075SQD



BF100U

FEATURES

- Peel and stick design ensures placement and will not displace when panel cover is removed
- UL94, V2
- Patented

APPLICATIONS

- Use to fill unused 1" and 3/4" breaker positions

STANDARD MATERIAL

- Plastic

PART #	COMPATIBLE BREAKER BANDS	MASTER QTY.
BF075SQD	SQUARE-D: QO & QOB	100
BF100U	GE, CUTER HAMMER "BR", CROUSE HINDS, SIEMENS, MURRAY, THOMAS & BETTS, SQUARE-D "HOMELINE, BRYANT, CHALLENGER, WESTINGHOUSE	100



Southwire™

PANEL & BREAKER ACCESSORIES CATALOG

get social with us:



[/SOUTHWIRETOOLS](https://www.facebook.com/SouthwireTools)



[/SOUTHWIRE-COMPANY](https://www.linkedin.com/company/southwire-company)



[@SOUTHWIRETOOLS](https://www.instagram.com/SouthwireTools)



[@SOUTHWIRE](https://www.youtube.com/Southwire)



SCAN TO LEARN MORE

WWW.SOUTHWIRE.COM | 1-855-SWT00LS

All Trademarks or Registered Trademarks (TM/®) are owned or licensed by Southwire Company.
Any other TM/®- Trademark or Registered Trademark of Southwire Company.