

Southwire™

CABLE TIES

CATALOG

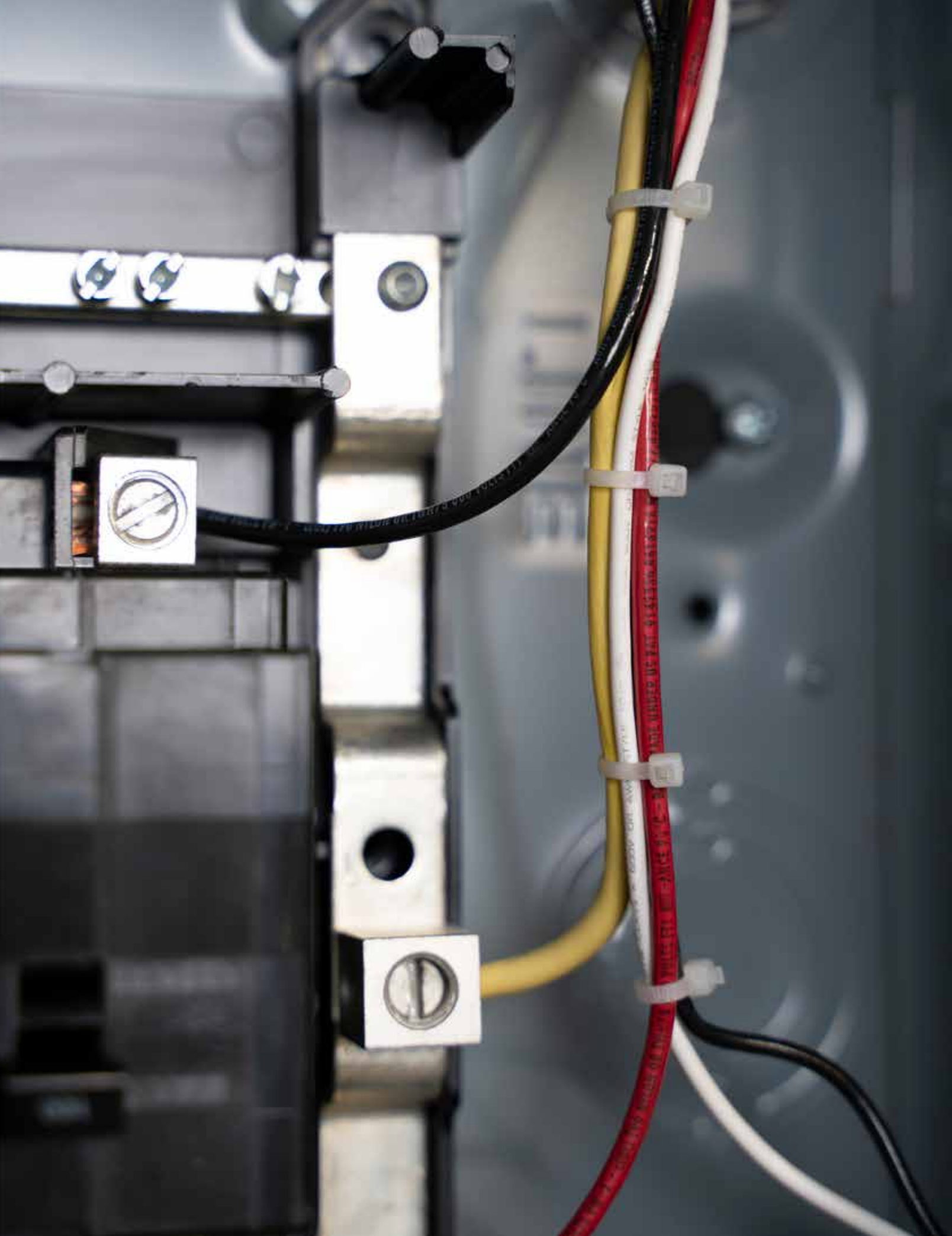
**[BUILT FOR DURABILITY.
BUILT FOR RELIABILITY.
BUILT FOR WORK.™]**

SOUTHWIRE.COM

CABLE TIES

Southwire offers an extensive selection of cable bundling and securing products to meet the needs of our customers.

Standard and Plenum Rated Cable Ties
Releasable and EZ-OFF™ Cable Ties
Heat Stabilized and Cold Weather Cable Ties
Mounting Head Cable Ties
Metal Detectable Cable Ties
Heavy Duty Mountable Cable Ties
Polar/Solar™ Cable Ties
Metal Barb Cable Ties
Clamp Ties



CABLE TIES

NATURAL WHITE - INDOOR USE



FEATURES

- Operating temperature minimum -40°F to maximum 185°F
- Easy grab tip for pick up from flat surfaces
- Low insertion for quick installation
- High Yield Strength

APPLICATIONS

- Safely and easily secures wire bundles and harness components

STANDARD MATERIAL

- Polyamide 6.6

CERTIFICATIONS

- Plenum AH2 Rated
- 50 & 120LB Series UL Type 21S
- Flammability rating UL 94-V2

| PART # | TENSILE STRENGTH (LBS.) | LENGTH | WIDTH | THICKNESS | MAX. BUNDLE DIAMETER | BAG QTY. | CASE QTY. | WEIGHT/CASE (LBS.) |
|----------|-------------------------|--------|--------|-----------|----------------------|----------|-----------|--------------------|
| BR4M9-C | 18 | 4.1" | 0.096" | 0.035" | 0.75" | 100 | 1,000 | 1 |
| BR6M9-C | 18 | 6.1" | 0.096" | 0.05" | 1.25" | 100 | 1,000 | 1.1 |
| BR8M9-C | 18 | 8.1" | 0.096" | 0.05" | 2.0" | 100 | 1,000 | 1.5 |
| BR5I9-C | 40 | 5.7" | 0.142" | 0.05" | 1.25" | 100 | 1,000 | 2 |
| BR8I9-C | 40 | 8.7" | 0.142" | 0.05" | 2.0" | 100 | 1,000 | 2 |
| BR7S9-C | 50 | 7.6" | 0.18" | 0.054" | 2.0" | 100 | 1,000 | 2 |
| BR11S9-C | 50 | 11.1" | 0.18" | 0.054" | 3.0" | 100 | 1,000 | 3 |
| BR14S9-C | 50 | 14.6" | 0.18" | 0.054" | 4.0" | 100 | 1,000 | 3 |
| BR8L9-C | 120 | 9" | 0.298" | 0.069" | 2.0" | 100 | 1,000 | 2 |
| BR11L9-C | 120 | 12" | 0.298" | 0.069" | 3.0" | 100 | 1,000 | 2 |
| BR14L9-C | 120 | 14.6" | 0.298" | 0.069" | 4.0" | 100 | 1,000 | 3 |

| PART # | TENSILE STRENGTH (LBS.) | LENGTH | WIDTH | THICKNESS | MAX. BUNDLE DIAMETER | BAG QTY. | CASE QTY. | WEIGHT/CASE (LBS.) |
|----------|-------------------------|--------|--------|-----------|----------------------|----------|-----------|--------------------|
| BL4M9-C | 18 | 4.1" | 0.096" | 0.035" | 0.75" | 100 | 10,000 | 6.8 |
| BL4M9-M | 18 | 4.1" | 0.096" | 0.035" | 0.75" | 1,000 | 10,000 | 6.8 |
| BL6M9-C | 18 | 6.1" | 0.096" | 0.05" | 1.25" | 100 | 20,000 | 24 |
| BL6M9-M | 18 | 6.1" | 0.096" | 0.05" | 1.25" | 1,000 | 20,000 | 24 |
| BL8M9-C | 18 | 8.1" | 0.096" | 0.05" | 2.0" | 100 | 20,000 | 30 |
| BL8M9-M | 18 | 8.1" | 0.096" | 0.05" | 2.0" | 1,000 | 20,000 | 30 |
| BL5I9-C | 40 | 5.7" | 0.142" | 0.05" | 1.25" | 100 | 10,000 | 17 |
| BL5I9-M | 40 | 5.7" | 0.142" | 0.05" | 1.25" | 1,000 | 10,000 | 17 |
| BL8I9-C | 40 | 8.7" | 0.142" | 0.05" | 2.0" | 100 | 10,000 | 24 |
| BL8I9-M | 40 | 8.7" | 0.142" | 0.05" | 2.0" | 1,000 | 10,000 | 24 |
| BL7S9-C | 50 | 7.6" | 0.18" | 0.054" | 2.0" | 100 | 10,000 | 30 |
| BL7S9-M | 50 | 7.6" | 0.18" | 0.054" | 2.0" | 1,000 | 10,000 | 30 |
| BL11S9-C | 50 | 11.1" | 0.18" | 0.054" | 3.0" | 100 | 5,000 | 20 |
| BL11S9-D | 50 | 11.1" | 0.18" | 0.054" | 3.0" | 500 | 5,000 | 20 |
| BL11S9-M | 50 | 11.1" | 0.18" | 0.054" | 3.0" | 1,000 | 5,000 | 20 |
| BL14S9-C | 50 | 14.6" | 0.18" | 0.054" | 4.0" | 100 | 5,000 | 25 |
| BL14S9-D | 50 | 14.6" | 0.18" | 0.054" | 4.0" | 500 | 5,000 | 25 |
| BL14S9-M | 50 | 14.6" | 0.18" | 0.054" | 4.0" | 1,000 | 5,000 | 25 |
| BL8L9-C | 120 | 9" | 0.298" | 0.069" | 2.0" | 100 | 2,500 | 21 |
| BL8L9-D | 120 | 9" | 0.298" | 0.069" | 2.0" | 500 | 2,500 | 21 |
| BL11L9-C | 120 | 12" | 0.298" | 0.069" | 3.0" | 100 | 2,000 | 22 |
| BL11L9-D | 120 | 12" | 0.298" | 0.069" | 3.0" | 500 | 2,000 | 22 |
| BL14L9-C | 120 | 14.6" | 0.298" | 0.069" | 4.0" | 100 | 2,000 | 26 |
| BL24H9-L | 175 | 24.1" | 0.350" | 0.087" | 7.2" | 50 | 500 | 15 |
| BL30H9-L | 175 | 29.6" | 0.350" | 0.087" | 12.0" | 50 | 500 | 19 |
| BL36H9-L | 175 | 36" | 0.350" | 0.087" | 11.0" | 50 | 500 | 21.5 |
| BL48H9-L | 175 | 48" | 0.350" | 0.087" | 15.0" | 50 | 500 | 27 |

CABLE TIES

CABLE TIES

BLACK UV STABILIZED - INDOOR/OUTDOOR USE



FEATURES

- Operating temperature minimum -40°F to maximum 185°F
- Easy grab tip for pick up from flat surfaces
- Low insertion for quick installation
- UV Resistant
- High Yield Strength

APPLICATIONS

- Safely and easily secures wire bundles and harness components

STANDARD MATERIAL

- Polyamide 6.6 UV Resistant

CERTIFICATIONS

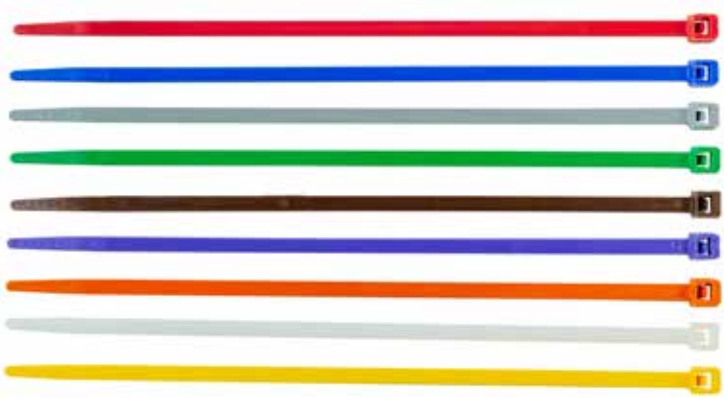
- Plenum AH2 Rated
- 50 & 120LB Series UL Type 21S
- Flammability rating UL 94-V2

| PART # | TENSILE STRENGTH (LBS.) | LENGTH | WIDTH | THICKNESS | MAX. BUNDLE DIAMETER | BAG QTY. | CASE QTY. | WEIGHT/CASE (LBS.) |
|----------|-------------------------|--------|--------|-----------|----------------------|----------|-----------|--------------------|
| BR4MO-C | 18 | 4.1" | 0.096" | 0.035" | 0.75" | 100 | 1,000 | 1 |
| BR6MO-C | 18 | 6.1" | 0.096" | 0.05" | 1.25" | 100 | 1,000 | 1.1 |
| BR8MO-C | 18 | 8.1" | 0.096" | 0.05" | 2.0" | 100 | 1,000 | 1.5 |
| BR5IO-C | 40 | 5.7" | 0.142" | 0.05" | 1.25" | 100 | 1,000 | 2 |
| BR8IO-C | 40 | 8.7" | 0.142" | 0.05" | 2.0" | 100 | 1,000 | 2 |
| BR7SO-C | 50 | 7.6" | 0.18" | 0.054" | 2.0" | 100 | 1,000 | 2 |
| BR11SO-C | 50 | 11.1" | 0.18" | 0.054" | 3.0" | 100 | 1,000 | 3 |
| BR14SO-C | 50 | 14.6" | 0.18" | 0.054" | 4.0" | 100 | 1,000 | 3 |
| BR8LO-C | 120 | 9" | 0.298" | 0.069" | 2.0" | 100 | 1,000 | 2 |
| BR11LO-C | 120 | 12" | 0.298" | 0.069" | 3.0" | 100 | 1,000 | 2 |
| BR14LO-C | 120 | 14.6" | 0.298" | 0.069" | 4.0" | 100 | 1,000 | 3 |

| PART # | TENSILE STRENGTH (LBS.) | LENGTH | WIDTH | THICKNESS | MAX. BUNDLE DIAMETER | BAG QTY. | CASE QTY. | WEIGHT/CASE (LBS.) |
|----------|-------------------------|--------|--------|-----------|----------------------|----------|-----------|--------------------|
| BL4MO-C | 18 | 4.1" | 0.096" | 0.035" | 0.75" | 100 | 10,000 | 6.8 |
| BL4MO-M | 18 | 4.1" | 0.096" | 0.035" | 0.75" | 1,000 | 10,000 | 6.8 |
| BL6MO-C | 18 | 6.1" | 0.096" | 0.05" | 1.25" | 100 | 20,000 | 24 |
| BL6MO-M | 18 | 6.1" | 0.096" | 0.05" | 1.25" | 1,000 | 20,000 | 24 |
| BL8MO-C | 18 | 8.1" | 0.096" | 0.05" | 2.0" | 100 | 20,000 | 30 |
| BL8MO-M | 18 | 8.1" | 0.096" | 0.05" | 2.0" | 1,000 | 20,000 | 30 |
| BL5IO-C | 40 | 5.7" | 0.142" | 0.05" | 1.25" | 100 | 10,000 | 17 |
| BL5IO-M | 40 | 5.7" | 0.142" | 0.05" | 1.25" | 1,000 | 10,000 | 17 |
| BL8IO-C | 40 | 8.7" | 0.142" | 0.05" | 2.0" | 100 | 10,000 | 24 |
| BL8IO-M | 40 | 8.7" | 0.142" | 0.05" | 2.0" | 1,000 | 10,000 | 24 |
| BL7SO-C | 50 | 7.6" | 0.18" | 0.054" | 2.0" | 100 | 10,000 | 30 |
| BL7SO-M | 50 | 7.6" | 0.18" | 0.054" | 2.0" | 1,000 | 10,000 | 30 |
| BL11SO-C | 50 | 11.1" | 0.18" | 0.054" | 3.0" | 100 | 5,000 | 20 |
| BL11SO-D | 50 | 11.1" | 0.18" | 0.054" | 3.0" | 500 | 5,000 | 20 |
| BL11SO-M | 50 | 11.1" | 0.18" | 0.054" | 3.0" | 1,000 | 5,000 | 20 |
| BL14SO-C | 50 | 14.6" | 0.18" | 0.054" | 4.0" | 100 | 5,000 | 25 |
| BL14SO-D | 50 | 14.6" | 0.18" | 0.054" | 4.0" | 500 | 5,000 | 25 |
| BL14SO-M | 50 | 14.6" | 0.18" | 0.054" | 4.0" | 1,000 | 5,000 | 25 |
| BL8LO-C | 120 | 9" | 0.298" | 0.069" | 2.0" | 100 | 2,500 | 21 |
| BL8LO-D | 120 | 9" | 0.298" | 0.069" | 2.0" | 500 | 2,500 | 21 |
| BL11LO-C | 120 | 12" | 0.298" | 0.069" | 3.0" | 100 | 2,000 | 22 |
| BL11LO-D | 120 | 12" | 0.298" | 0.069" | 3.0" | 500 | 2,000 | 22 |
| BL14LO-C | 120 | 14.6" | 0.298" | 0.069" | 4.0" | 100 | 2,000 | 26 |
| BL24HO-L | 175 | 24.1" | 0.350" | 0.087" | 7.2" | 50 | 500 | 15 |
| BL30HO-L | 175 | 29.6" | 0.350" | 0.087" | 12.0" | 50 | 500 | 19 |
| BL36HO-L | 175 | 36" | 0.350" | 0.087" | 11.0" | 50 | 500 | 21.5 |
| BL48HO-L | 175 | 48" | 0.350" | 0.087" | 15.0" | 50 | 500 | 27 |

CABLE TIES

CABLE TIES - COLORED



FEATURES

- Operating temperature minimum -40°F to maximum 185°F
- Easy grab tip for pick up from flat surfaces
- Low insertion for quick installation
- High Yield Strength

APPLICATIONS

- Safely and easily secures wire bundles and harness components
- Colored cable ties are designed for use in general applications where unique identification is needed, while delivering ease of installation, consistent performance, and industry leading reliability

STANDARD MATERIAL

- Polyamide 6.6

CERTIFICATIONS

- Plenum AH2 Rated
- 50 & 120LB Series UL Type 21S
- Flammability rating UL 94-V2

| PART # | TENSILE STRENGTH (LBS.) | ENVIRONMENT | COLOR | LENGTH | WIDTH | THICKNESS | MAX. BUNDLE DIAMETER | BAG QTY. | CASE QTY. | WEIGHT/ CASE (LBS.) |
|------------|-------------------------|-------------|-----------------|--------|--------|-----------|----------------------|----------|-----------|---------------------|
| BR4M(*)-C | 18 | INDOOR | SEE TABLE BELOW | 4.1" | 0.096" | 0.035" | 0.75" | 100 | 1,000 | 6.8 |
| BR6M(*)-C | 18 | | | 6.1" | 0.096" | 0.05" | 1.25" | 100 | 1,000 | 24 |
| BR8M(*)-C | 18 | | | 8.1" | 0.096" | 0.05" | 2.0" | 100 | 1,000 | 30 |
| BR5I(*)-C | 40 | | | 5.7" | 0.142" | 0.05" | 1.25" | 100 | 1,000 | 17 |
| BR8I(*)-C | 40 | | | 8.7" | 0.142" | 0.05" | 2.0" | 100 | 1,000 | 24 |
| BR7S(*)-C | 50 | | | 7.6" | 0.180" | 0.055" | 2.0" | 100 | 1,000 | 30 |
| BR11S(*)-C | 50 | | | 11.1" | 0.18" | 0.054" | 3.0" | 100 | 1,000 | 20 |
| BR14S(*)-C | 50 | | | 14.6" | 0.18" | 0.054" | 4.0" | 100 | 1,000 | 25 |
| BR8L(*)-C | 120 | | | 9" | 0.298" | 0.069" | 2.0" | 100 | 1,000 | 21 |
| BR11L(*)-C | 120 | | | 12" | 0.298" | 0.069" | 3.0" | 100 | 1,000 | 22 |
| BR14L(*)-C | 120 | | | 14.6" | 0.298" | 0.069" | 4.0" | 100 | 1,000 | 26 |

*INSERT NUMBER SUFFIX FOR COLOR

| SUFFIX | 1 | 2 | 3 | 4 | 5 | 6 |
|--------|-------|-----|--------|--------|-------|------|
| COLOR | BROWN | RED | ORANGE | YELLOW | GREEN | BLUE |

*INSERT NUMBER SUFFIX FOR COLOR

| SUFFIX | 7 | 8 | 11 | 12 | 13 | 14 | 15 |
|--------|--------|------|-------------------|------------------|--------------------|--------------------|------------------|
| COLOR | PURPLE | GRAY | FLUORESCENT GREEN | FLUORESCENT PINK | FLUORESCENT YELLOW | FLUORESCENT ORANGE | FLUORESCENT BLUE |

CABLE TIES

CABLE TIES - COLORED CONTINUED

| PART # | TENSILE STRENGTH (LBS.) | ENVIRONMENT | COLOR | LENGTH | WIDTH | THICKNESS | MAX. BUNDLE DIAMETER | BAG QTY. | CASE QTY. | WEIGHT/ CASE (LBS.) |
|------------|-------------------------|-------------|-----------------|--------|--------|-----------|----------------------|----------|-----------|---------------------|
| BL4M(*)-C | 18 | INDOOR | SEE TABLE BELOW | 4.1" | 0.096" | 0.035" | 0.75" | 100 | 10,000 | 6.8 |
| BL4M(*)-M | 18 | | | 4.1" | 0.096" | 0.035" | 0.75" | 1,000 | 10,000 | 6.8 |
| BL6M(*)-C | 18 | | | 6.1" | 0.096" | 0.05" | 1.25" | 100 | 20,000 | 24 |
| BL6M(*)-M | 18 | | | 6.1" | 0.096" | 0.05" | 1.25" | 1,000 | 20,000 | 24 |
| BL8M(*)-C | 18 | | | 8.1" | 0.096" | 0.05" | 2.0" | 100 | 20,000 | 30 |
| BL8M(*)-M | 18 | | | 8.1" | 0.096" | 0.05" | 2.0" | 1,000 | 20,000 | 30 |
| BL5I(*)-C | 40 | | | 5.7" | 0.142" | 0.05" | 1.25" | 100 | 10,000 | 17 |
| BL5I(*)-M | 40 | | | 5.7" | 0.142" | 0.05" | 1.25" | 1,000 | 10,000 | 17 |
| BL8I(*)-C | 40 | | | 8.7" | 0.142" | 0.05" | 2.0" | 100 | 10,000 | 24 |
| BL8I(*)-M | 40 | | | 8.7" | 0.142" | 0.05" | 2.0" | 1,000 | 10,000 | 24 |
| BL7S(*)-C | 50 | | | 7.6" | 0.180" | 0.055" | 2.0" | 100 | 10,000 | 30 |
| BL7S(*)-M | 50 | | | 7.6" | 0.180" | 0.055" | 2.0" | 1,000 | 10,000 | 30 |
| BL11S(*)-C | 50 | | | 11.1" | 0.18" | 0.054" | 3.0" | 100 | 5,000 | 20 |
| BL11S(*)-M | 50 | | | 11.1" | 0.18" | 0.054" | 3.0" | 1,000 | 5,000 | 20 |
| BL14S(*)-C | 50 | | | 14.6" | 0.18" | 0.054" | 4.0" | 100 | 5,000 | 25 |
| BL14S(*)-M | 50 | | | 14.6" | 0.18" | 0.054" | 4.0" | 1,000 | 5,000 | 25 |
| BL8L(*)-C | 120 | | | 9" | 0.298" | 0.069" | 2.0" | 100 | 2,500 | 21 |
| BL11L(*)-C | 120 | | | 12" | 0.298" | 0.069" | 3.0" | 100 | 2,000 | 22 |
| BL14L(*)-C | 120 | | | 14.6" | 0.298" | 0.069" | 4.0" | 100 | 2,000 | 26 |

*INSERT NUMBER SUFFIX FOR COLOR

| SUFFIX | 1 | 2 | 3 | 4 | 5 | 6 |
|--------|-------|-----|--------|--------|-------|------|
| COLOR | BROWN | RED | ORANGE | YELLOW | GREEN | BLUE |

*INSERT NUMBER SUFFIX FOR COLOR

| SUFFIX | 7 | 8 | 11 | 12 | 13 | 14 | 15 |
|--------|--------|------|-------------------|------------------|--------------------|--------------------|------------------|
| COLOR | PURPLE | GRAY | FLUORESCENT GREEN | FLUORESCENT PINK | FLUORESCENT YELLOW | FLUORESCENT ORANGE | FLUORESCENT BLUE |

CABLE TIES

METAL BARB CABLE TIES

CABLE TIES WITH A STAINLESS STEEL BARB FOR SUPERIOR WIRE MANAGEMENT



FEATURES

- Stainless steel barb provides a secure and reliable self-locking mechanism
- Safely and easily secures wire bundles and harness components
- Suitable for Air Handling Spaces (AH-2)
- Available in lengths from 4" to 30" with tensile strength from 18lbs to 120lbs

STANDARD MATERIAL

- Strong, durable 304 stainless steel BARB construction for enhanced durability and strength

CERTIFICATIONS

- Plenum AH2 Rated
- cULus Listed per UL Standard 62275, Type 21 or 21S

| PART # | TENSILE STRENGTH (LBS.) | COLOR | LENGTH | MAX. BUNDLE DIAMETER | BAG QTY. | CASE QTY. |
|------------|-------------------------|----------|--------|----------------------|----------|-----------|
| BR4MMP0-C | 18 | UV BLACK | 4.0" | 0.8" | 100 | 1,000 |
| BR4MMP9-C | 18 | NATURAL | 4.0" | 0.8" | 100 | 1,000 |
| BR6MMP0-C | 18 | UV BLACK | 6.3" | 1.56" | 100 | 1,000 |
| BR6MMP9-C | 18 | NATURAL | 6.3" | 1.56" | 100 | 1,000 |
| BR8MMP0-C | 18 | UV BLACK | 8.0" | 2.06" | 100 | 1,000 |
| BR8MMP9-C | 18 | NATURAL | 8.0" | 2.06" | 100 | 1,000 |
| BR5IMP0-C | 40 | UV BLACK | 5.5" | 1.30" | 100 | 1,000 |
| BR5IMP9-C | 40 | NATURAL | 5.5" | 1.30" | 100 | 1,000 |
| BR8IMP0-C | 40 | UV BLACK | 8.0" | 2.06" | 100 | 1,000 |
| BR8IMP9-C | 40 | NATURAL | 8.0" | 2.06" | 100 | 1,000 |
| BR12IMP0-C | 40 | UV BLACK | 11.8" | 3.30" | 100 | 1,000 |
| BR12IMP9-C | 40 | NATURAL | 11.8" | 3.30" | 100 | 1,000 |
| BR15IMP0-C | 40 | UV BLACK | 14.5" | 4.17" | 100 | 1,000 |
| BR15IMP9-C | 40 | NATURAL | 14.5" | 4.17" | 100 | 1,000 |
| BR8SMP0-C | 50 | UV BLACK | 8.0" | 1.94" | 100 | 1,000 |
| BR8SMP9-C | 50 | NATURAL | 8.0" | 1.94" | 100 | 1,000 |
| BR12SMP0-C | 50 | UV BLACK | 11.8" | 3.18" | 100 | 1,000 |
| BR12SMP9-C | 50 | NATURAL | 11.8" | 3.18" | 100 | 1,000 |
| BR15SMP0-C | 50 | UV BLACK | 14.5" | 4.07" | 100 | 1,000 |
| BR15SMP9-C | 50 | NATURAL | 14.5" | 4.07" | 100 | 1,000 |
| BR8LMP0-L | 120 | UV BLACK | 8.6" | 2.25" | 50 | 500 |
| BR8LMP9-L | 120 | NATURAL | 8.6" | 2.25" | 50 | 500 |
| BR12LMP0-L | 120 | UV BLACK | 11.8" | 3.25" | 50 | 500 |
| BR12LMP9-L | 120 | NATURAL | 11.8" | 3.25" | 50 | 500 |
| BR14LMP0-L | 120 | UV BLACK | 14.5" | 4.07" | 50 | 500 |
| BR14LMP9-L | 120 | NATURAL | 14.5" | 4.07" | 50 | 500 |
| BR18LMP0-L | 120 | UV BLACK | 18.0" | 5.13" | 50 | 500 |
| BR18LMP9-L | 120 | NATURAL | 18.0" | 5.13" | 50 | 500 |
| BR24LMP0-L | 120 | UV BLACK | 24.4" | 7.14" | 50 | 500 |
| BR24LMP9-L | 120 | NATURAL | 24.4" | 7.14" | 50 | 500 |
| BR30LMP0-L | 120 | UV BLACK | 30.0" | 3.31" | 50 | 500 |
| BR30LMP9-L | 120 | NATURAL | 30.0" | 3.31" | 50 | 500 |

CABLE TIES

CABLE TIES - RELEASABLE



FEATURES

- Operating temperature minimum -40°F to maximum 185°F
- Easy to use release tab
- Low insertion for quick installation
- High Yield Strength

APPLICATIONS

- Safely and easily secures wire bundles and harness components
- Releasable cable ties are designed for use in general temporarily or permanent applications, while delivering ease of installation, consistent performance, and industry leading reliability

STANDARD MATERIAL

- Polyamide 6.6

CERTIFICATIONS

- Plenum AH2 Rated
- 50 & 120LB Series UL Type 21S
- Flammability rating UL 94-V2

| PART # | TENSILE STRENGTH (LBS.) | ENVIRONMENT | COLOR | LENGTH | WIDTH | THICKNESS | MAX. BUNDLE DIAMETER | BAG QTY. | CASE QTY. | WEIGHT/ CASE (LBS.) |
|-----------|-------------------------|------------------|---------|--------|-------|-----------|----------------------|----------|-----------|---------------------|
| BR7SR9-C | 50 | INDOOR | NATURAL | 7.6" | 0.18" | 0.055" | 2.0" | 100 | 1,000 | 2 |
| BR11SR9-C | 50 | | | 11.1" | 0.18" | 0.055" | 3.0" | 100 | 1,000 | 2 |
| BR14SR9-C | 50 | | | 14.6" | 0.18" | 0.055" | 4.0" | 100 | 1,000 | 3 |
| BR7SR0-C | 50 | INDOOR / OUTDOOR | BLACK | 7.6" | 0.18" | 0.055" | 2.0" | 100 | 1,000 | 2 |
| BR11SR0-C | 50 | | | 11.1" | 0.18" | 0.055" | 3.0" | 100 | 1,000 | 2 |
| BR14SR0-C | 50 | | | 14.6" | 0.18" | 0.055" | 4.0" | 100 | 1,000 | 3 |

| PART # | TENSILE STRENGTH (LBS.) | ENVIRONMENT | COLOR | LENGTH | WIDTH | THICKNESS | MAX. BUNDLE DIAMETER | BAG QTY. | CASE QTY. | WEIGHT/ CASE (LBS.) |
|-----------|-------------------------|------------------|---------|--------|-------|-----------|----------------------|----------|-----------|---------------------|
| BL7SR9-C | 50 | INDOOR | NATURAL | 7.6" | 0.18" | 0.055" | 2.0" | 100 | 10,000 | 20 |
| BL11SR9-C | 50 | | | 11.1" | 0.18" | 0.055" | 3.0" | 100 | 5,000 | 20 |
| BL14SR9-C | 50 | | | 14.6" | 0.18" | 0.055" | 4.0" | 100 | 5,000 | 25 |
| BL7SR0-C | 50 | INDOOR / OUTDOOR | BLACK | 7.6" | 0.18" | 0.055" | 2.0" | 100 | 10,000 | 20 |
| BL11SR0-C | 50 | | | 11.1" | 0.18" | 0.055" | 3.0" | 100 | 5,000 | 20 |
| BL14SR0-C | 50 | | | 14.6" | 0.18" | 0.055" | 4.0" | 100 | 5,000 | 25 |

CABLE TIES

POLAR/SOLAR® CABLE TIES

NYLON 6/12 CABLE TIES FOR SOLAR APPLICATIONS



FEATURES

- Greater UV resistance for long life expectancy
- High moisture, salt, and chemical resistance
- Good impact resistance
- Cost effective solution compared to Nylon 12 Cable Ties while delivering similar performance in harsh and hazardous environments

APPLICATIONS

- Safely and easily secures wire bundles and harness components
- Low thread force for quick and easy installation
- Manufactured using polyamide 6/12 suitable indoor and outdoors applications
- Operating temperature minimum -40°F to maximum 194°F

STANDARD MATERIAL

- Polyamide 6/12

| PART # | TENSILE STRENGTH (LBS.) | COLOR | LENGTH | WIDTH | THICKNESS | MAX. BUNDLE DIAMETER | BAG QTY. | CASE QTY. |
|-----------|-------------------------|----------|--------|--------|-----------|----------------------|----------|-----------|
| BR4MPS-C | 18 | UV BLACK | 4.1" | 0.096" | 0.035" | 0.75" | 100 | 1,000 |
| BL4MPS-M | 18 | UV BLACK | 4.1" | 0.096" | 0.035" | 0.75" | 1,000 | 10,000 |
| BR5IPS-C | 40 | UV BLACK | 5.7" | 0.142" | 0.05" | 1.25" | 100 | 1,000 |
| BL5IPS-M | 40 | UV BLACK | 5.7" | 0.142" | 0.05" | 1.25" | 1,000 | 10,000 |
| BR8IPS-C | 40 | UV BLACK | 8.7" | 0.142" | 0.05" | 2.0" | 100 | 1,000 |
| BL8IPS-M | 40 | UV BLACK | 8.7" | 0.142" | 0.05" | 2.0" | 1,000 | 10,000 |
| BR7SPS-C | 50 | UV BLACK | 7.6" | 0.18" | 0.054" | 2.0" | 100 | 1,000 |
| BL7SPS-M | 50 | UV BLACK | 7.6" | 0.18" | 0.054" | 2.0" | 1,000 | 5,000 |
| BR11SPS-C | 50 | UV BLACK | 11.1" | 0.18" | 0.054" | 3.0" | 100 | 1,000 |
| BL11SPS-M | 50 | UV BLACK | 11.1" | 0.18" | 0.054" | 3.0" | 1,000 | 5,000 |
| BR14SPS-C | 50 | UV BLACK | 14.6" | 0.18" | 0.054" | 4.0" | 100 | 1,000 |
| BL14SPS-M | 50 | UV BLACK | 14.6" | 0.18" | 0.054" | 4.0" | 1,000 | 5,000 |
| BR8LPS-C | 120 | UV BLACK | 9" | 0.298" | 0.069" | 2.0" | 100 | 2,500 |
| BR11LPS-C | 120 | UV BLACK | 12" | 0.298" | 0.069" | 3.0" | 100 | 2,000 |
| BR14LPS-C | 120 | UV BLACK | 14.6" | 0.298" | 0.069" | 4.0" | 100 | 2,000 |
| BL24HPS-L | 175 | UV BLACK | 24.1" | 0.350" | 0.087" | 7.2" | 50 | 500 |
| BL36HPS-L | 175 | UV BLACK | 36" | 0.350" | 0.087" | 11.0" | 50 | 500 |

CABLE TIES

CABLE TIES - HEAT STABILIZED



FEATURES

- Operating temperature minimum -40°F to maximum 221°F
- Easy grab tip for pick up from flat surfaces
- Low insertion for quick installation
- High Yield Strength

APPLICATIONS

- Safely and easily secures wire bundles and harness components
- Heat Stabilized cable ties are utilized in harsh conditions where extreme heat is a concern

STANDARD MATERIAL

- Polyamide 6.6 UV Resistant Heat Stabilized

CERTIFICATIONS

- Plenum AH2 Rated
- UL Type 21
- Flammability rating UL 94-V2



| PART # | TENSILE STRENGTH (LBS.) | ENVIRONMENT | COLOR | LENGTH | WIDTH | THICKNESS | MAX. BUNDLE DIAMETER | BAG QTY. | CASE QTY. | WEIGHT/ CASE (LBS.) |
|------------|-------------------------|------------------|---------------------------|--------|--------|-----------|----------------------|----------|-----------|---------------------|
| BL4MHS0-M | 18 | INDOOR / OUTDOOR | UV BLACK, HEAT STABILIZED | 4.1" | 0.096" | 0.035" | 0.75" | 1,000 | 10,000 | 17 |
| BL5IHS0-M | 40 | | | 5.7" | 0.142" | 0.05" | 1.25" | 1,000 | 10,000 | 17 |
| BL7SHS0-M | 50 | | | 7.6" | 0.18" | 0.054" | 2.0" | 1,000 | 10,000 | 30 |
| BL11SHS0-M | | | | 11.1" | 0.18" | 0.054" | 3.0" | 1,000 | 5,000 | 20 |
| BL14SHS0-M | | | | 14.6" | 0.18" | 0.054" | 4.0" | 1,000 | 5,000 | 25 |
| BL14LHS0-C | 120 | | | 14.6" | 0.298" | 0.069" | 4.0" | 100 | 2,000 | 26 |

CABLE TIES - COLD WEATHER



FEATURES

- Operating temperature minimum -40°F to maximum 221°F
- Easy grab tip for pick up from flat surfaces
- Low insertion for quick installation
- Limited brittleness and flexible at cold temps (-20°F Installation Temp)

APPLICATIONS

- Safely and easily secures wire bundles and harness components
- Cold weather ties are used in applications where cold and sunlight are factors

STANDARD MATERIAL

- Polyamide 6.6 UV Resistant Elite Cold Weather

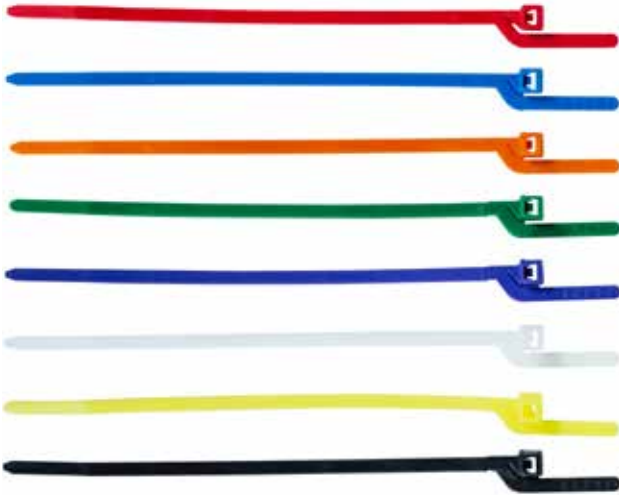
CERTIFICATIONS

- Plenum AH2 Rated
- UL Type 21S
- Flammability rating UL 94V-HB



| PART # | TENSILE STRENGTH (LBS) | ENVIRONMENT | COLOR | LENGTH | WIDTH | THICKNESS | BAG QTY. | CASE QTY. |
|------------|------------------------|-----------------|-----------|--------|-------|-----------|----------|-----------|
| BL7SAW0-C | 50 | OUTDOOR/ INDOOR | BLACK, UV | 7.6" | .18" | .054" | 100 | 10,000 |
| BL11SAW0-C | | | | 11.1" | .18" | .054" | 100 | 5,000 |
| BL14SAW0-C | | | | 14.6" | .18" | .054" | 100 | 5,000 |
| BL14LAW0-C | 120 | | | 14.6" | .298" | .069" | 100 | 2,000 |

EZ-OFF™ CABLE TIES



FEATURES

- Simply pull down tear-off arm located along the right side of cable tie head
- Patent # 7,062,820

APPLICATIONS

- Safely and easily secures wire bundles and harness components
- EZ-OFF™ cable ties are designed specifically to be tamper proof and removed without any cutting device

STANDARD MATERIAL

- Polypropylene

| PART # | TENSILE STRENGTH (LBS.) | ENVIRONMENT | COLOR | LENGTH | WIDTH | THICKNESS | MAX. BUNDLE DIAMETER | BAG QTY. | CASE QTY. | WEIGHT/ CASE (LBS.) |
|-----------|-------------------------|-------------|---------|--------|-------|-----------|----------------------|----------|-----------|---------------------|
| BRTSP60-C | 18 | INDOOR | BLACK | 5.6" | 0.14" | 0.054" | 1.25" | 100 | 1,000 | 2 |
| BRTSP69-C | 18 | | NATURAL | 5.6" | 0.14" | 0.054" | 1.25" | 100 | 1,000 | 2 |

| PART # | TENSILE STRENGTH (LBS.) | ENVIRONMENT | COLOR | LENGTH | WIDTH | THICKNESS | MAX. BUNDLE DIAMETER | BAG QTY. | CASE QTY. | WEIGHT/ CASE (LBS.) |
|-------------|-------------------------|-------------|-----------------|--------|-------|-----------|----------------------|----------|-----------|---------------------|
| BLTSP6(*)-C | 18 | INDOOR | SEE TABLE BELOW | 5.6" | 0.14" | 0.054" | 1.25" | 100 | 10,000 | 23 |
| BLTSP6(*)-M | 18 | | | 5.6" | 0.14" | 0.054" | 1.25" | 1,000 | 10,000 | 23 |

*INSERT NUMBER SUFFIX FOR COLOR

| SUFFIX | 1 | 2 | 3 | 4 | 5 | 6 | 7 | 8 | 9 | 0 |
|--------|-------|-----|--------|--------|-------|------|--------|------|---------|-------|
| COLOR | BROWN | RED | ORANGE | YELLOW | GREEN | BLUE | PURPLE | GRAY | NATURAL | BLACK |

CABLE TIES - MOUNTING HEAD



FEATURES

- Operating temperature minimum -40°F to maximum 185°F
- Easy grab tip for pick up from flat surfaces
- Low insertion for quick installation
- High Yield Strength

APPLICATIONS

- Safely and easily secures wire bundles and harness components
- Screw mount cable ties allow cable bundles to be secured permanently to any surface
- Ideal for communication racks, walls, or ceilings

STANDARD MATERIAL

- Polyamide 6.6 UV Resistant (Outdoor)
- Polyamide 6.6 (Indoor)

CERTIFICATIONS

- Plenum AH2 Rated
- UL Type 21
- Flammability rating UL 94-V2



| PART # | TENSILE STRENGTH (LBS.) | ENVIRONMENT | COLOR | LENGTH | WIDTH | THICKNESS | MAX. BUNDLE DIAMETER | SCREW SIZE | BAG QTY. | CASE QTY. | WEIGHT/ CASE (LBS.) |
|------------|-------------------------|------------------|---------|--------|--------|-----------|----------------------|------------|----------|-----------|---------------------|
| BR7SMH9-C | 50 | INDOOR | NATURAL | 7.6" | 0.180" | 0.055" | 2.0" | #10 | 100 | 1,000 | 2 |
| BR11SMH9-C | 50 | | | 11.1" | 0.180" | 0.055" | 3.0" | #10 | 100 | 1,000 | 2 |
| BR14SMH9-C | 50 | | | 14.6" | 0.180" | 0.055" | 4.0" | #10 | 100 | 1,000 | 3 |
| BR14LMH9-C | 120 | | | 14.6" | 0.298" | 0.069" | 4.0" | 1/4" | 100 | 1,000 | 3 |
| BR7SMH0-C | 50 | INDOOR / OUTDOOR | BLACK | 7.6" | 0.180" | 0.055" | 2.0" | #10 | 100 | 1,000 | 2 |
| BR11SMH0-C | 50 | | | 11.1" | 0.180" | 0.055" | 3.0" | #10 | 100 | 1,000 | 2 |
| BR14SMH0-C | 50 | | | 14.6" | 0.180" | 0.055" | 4.0" | #10 | 100 | 1,000 | 3 |
| BR14LMH0-C | 120 | | | 14.6" | 0.298" | 0.069" | 4.0" | 1/4" | 100 | 1,000 | 3 |

| PART # | TENSILE STRENGTH (LBS.) | ENVIRONMENT | COLOR | LENGTH | WIDTH | THICKNESS | MAX. BUNDLE DIAMETER | SCREW SIZE | BAG QTY. | CASE QTY. | WEIGHT/ CASE (LBS.) |
|------------|-------------------------|------------------|---------|--------|--------|-----------|----------------------|------------|----------|-----------|---------------------|
| BL7SMH9-C | 50 | INDOOR | NATURAL | 7.6" | 0.180" | 0.055" | 2.0" | #10 | 100 | 5,000 | 20 |
| BL7SMH9-M | 50 | | | 7.6" | 0.180" | 0.055" | 2.0" | #10 | 1,000 | 5,000 | 20 |
| BL11SMH9-C | 50 | | | 11.1" | 0.180" | 0.055" | 3.0" | #10 | 100 | 5,000 | 21 |
| BL14SMH9-C | 50 | | | 14.6" | 0.180" | 0.055" | 4.0" | #10 | 100 | 5,000 | 29 |
| BL14LMH9-C | 120 | | | 14.6" | 0.298" | 0.069" | 4.0" | 1/4" | 100 | 2,000 | 31 |
| BL7SMH0-C | 50 | INDOOR / OUTDOOR | BLACK | 7.6" | 0.180" | 0.055" | 2.0" | #10 | 100 | 5,000 | 20 |
| BL7SMH0-M | 50 | | | 7.6" | 0.180" | 0.055" | 2.0" | #10 | 1,000 | 5,000 | 20 |
| BL11SMH0-C | 50 | | | 11.1" | 0.180" | 0.055" | 3.0" | #10 | 100 | 5,000 | 21 |
| BL14SMH0-C | 50 | | | 14.6" | 0.180" | 0.055" | 4.0" | #10 | 100 | 5,000 | 29 |
| BL14LMH0-C | 120 | | | 14.6" | 0.298" | 0.069" | 4.0" | 1/4" | 100 | 2,000 | 31 |

CABLE TIES

CABLE TIES - METAL DETECTABLE



FEATURES

- Operating temperature minimum -40°F to maximum 185°F
- Easy grab tip for pick up from flat surfaces
- Low insertion for quick installation
- Teal color of easy identification in food processing areas

APPLICATIONS

- Safely and easily secures wire bundles and harness components
- Metal Detectable cable ties are impregnated with metal flakes and can be used safely and efficiently in a wide range of indoor food processing applications

STANDARD MATERIAL

- Polyamide 6.6

CERTIFICATIONS

- Flammability rating UL 94-V2
- FDA Approved: Complies with 21 CFR 177-1500

| PART # | TENSILE STRENGTH (LBS.) | ENVIRONMENT | COLOR | LENGTH | WIDTH | THICKNESS | MAX. BUNDLE DIAMETER | BAG QTY. | CASE QTY. | WEIGHT/ CASE (LBS.) |
|-----------|-------------------------|-------------|-------|--------|--------|-----------|----------------------|----------|-----------|---------------------|
| BL4MMD-C | 18 | INDOOR | TEAL | 4.1" | 0.096" | 0.035" | 0.75" | 100 | 10,000 | 6.8 |
| BL4MMD-M | 18 | | | 4.1" | 0.096" | 0.035" | 0.75" | 1,000 | 10,000 | 6.8 |
| BL8IMD-C | 40 | | | 8.7" | 0.142" | 0.050" | 2.0" | 100 | 10,000 | 24 |
| BL8IMD-M | 40 | | | 8.7" | 0.142" | 0.050" | 2.0" | 1,000 | 10,000 | 24 |
| BL7SMD-C | 50 | | | 7.6" | 0.18" | 0.054" | 2.0" | 100 | 10,000 | 30 |
| BL7SMD-M | 50 | | | 7.6" | 0.18" | 0.054" | 2.0" | 1,000 | 10,000 | 30 |
| BL11SMD-C | 50 | | | 11.1" | 0.18" | 0.054" | 3.0" | 100 | 5,000 | 20 |
| BL14SMD-C | 50 | | | 14.6" | 0.18" | 0.054" | 4.0" | 100 | 5,000 | 25 |
| BL14LMD-C | 120 | | | 14.6" | 0.298" | 0.069" | 4.0" | 100 | 2,000 | 26 |

CABLE TIES - HEAVY DUTY MOUNTABLE



FEATURES

- Operating temperature minimum -40°F to maximum 185°F
- Easy grab tip for pick up from flat surfaces
- Patented Design with Unique and integral mounting holes
- Easy to use release tab

APPLICATIONS

- Safely and easily secures wire bundles and harness components
- Easily mount to any standard surface with a screw or nail without splitting the tie itself, using the evenly spaced pre-molded holes

STANDARD MATERIAL

- Polyamide 6.6 UV Resistant

CERTIFICATIONS

- Plenum AH2 Rated



| PART # | TENSILE STRENGTH (LBS.) | ENVIRONMENT | COLOR | LENGTH | WIDTH | THICKNESS | MAX. BUNDLE DIAMETER | BAG QTY. | CASE QTY. | WEIGHT/ CASE (LBS.) |
|----------|-------------------------|------------------|----------|--------|-------|-----------|----------------------|----------|-----------|---------------------|
| 58298240 | 50 | INDOOR / OUTDOOR | UV BLACK | 8" | 0.37" | 0.06" | 2.0" | 15 | 375 | 5.9 |
| 58298340 | 50 | | | 11" | 0.37" | 0.06" | 3.0" | 15 | 375 | 8.9 |
| 58298440 | 50 | | | 14" | 0.37" | 0.06" | 4.0" | 15 | 375 | 10.5 |
| 58298540 | 50 | | | 8" | 0.37" | 0.06" | 2.0" | 100 | 1,000 | 8.5 |
| 58298640 | 50 | | | 11" | 0.37" | 0.06" | 3.0" | 100 | 1,000 | 9.5 |
| 58298740 | 50 | | | 14" | 0.37" | 0.06" | 4.0" | 100 | 1,000 | 11.5 |
| 59506940 | 90 | | | 8" | 0.56" | 0.08" | 2.0" | 100 | 1,000 | 8.5 |
| 59507040 | 90 | | | 11" | 0.56" | 0.08" | 3.0" | 100 | 1,000 | 9.5 |
| 59507140 | 90 | | | 14" | 0.56" | 0.06" | 4.0" | 100 | 1,000 | 11.5 |

RELEASABLE



FEATURES

- Operating temperature minimum -40°F to maximum 185°F
- Easy grab tip for pick up from flat surfaces
- Patented Design with unique and integral mounting holes
- Easy to use release tab

APPLICATIONS

- Safely and easily secures wire bundles and harness components
- Easily mount to any standard surface with a screw or nail without splitting the tie itself, using the evenly spaced pre-molded holes

STANDARD MATERIAL

- Polyamide 6.6

CERTIFICATIONS

- Plenum AH2 Rated



| PART # | TENSILE STRENGTH (LBS.) | ENVIRONMENT | COLOR | LENGTH | WIDTH | THICKNESS | MAX. BUNDLE DIAMETER | BAG QTY. | CASE QTY. | WEIGHT/ CASE (LBS.) |
|----------|-------------------------|-------------|-------|--------|-------|-----------|----------------------|----------|-----------|---------------------|
| 58298840 | 50 | INDOOR | RED | 8" | 0.37" | 0.06" | 2.0" | 100 | 1,000 | 8.5 |
| 58298940 | 50 | | | 11" | 0.37" | 0.06" | 3.0" | 100 | 1,000 | 9.5 |
| 58299040 | 50 | | | 14" | 0.37" | 0.06" | 4.0" | 100 | 1,000 | 11.5 |

CABLE TIES - AIR HANDLING

PLENUM RATED



FEATURES

- Operating temperature minimum -40°F to maximum 185°F
- Easy grab tip for pick up from flat surfaces
- Low profile style and reduced head height increases safety, eliminates snags, cuts, and abrasions to cables, surrounding products and users
- Meets UL 1565 specifications for low smoke generation, low heat release and mechanical strength

APPLICATIONS

- Safely and easily secures wire bundles and harness components
- Air handling spaces, above drop ceilings and below raised flooring
- UL listed suitable for use in air handling spaces in accordance with the section 300.00 (c) and (d) of the National Electrical Code rules 12-010(3), (4) and (5) and 12-020 of the Canadian Electrical Code part 1

STANDARD MATERIAL

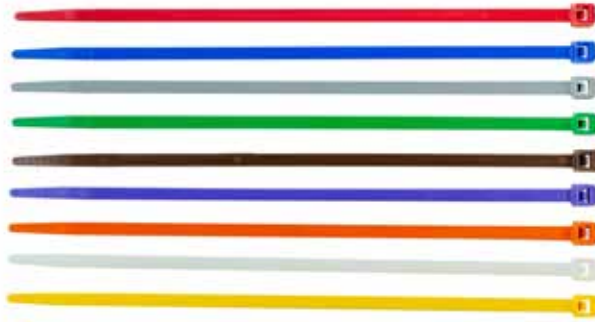
- Polyamide 6.6

CERTIFICATIONS

- Plenum AH2 Rated
- 50 & 120LB Series UL Type 21S
- Flammability rating UL 94-V2

| PART # | TENSILE STRENGTH (LBS) | COLOR | LENGTH | WIDTH | THICKNESS | MAX. BUNDLE DIAMETER | PACK | CASE QTY. |
|-----------|------------------------|----------|--------|--------|-----------|----------------------|------|-----------|
| BL4MAH-C | 18 LB | BURGUNDY | 4.1" | 0.096" | 0.035" | .75" | 100 | 10,000 |
| BL7SAH-C | 50 LB | BURGUNDY | 7.6" | .18" | .054" | 2" | 100 | 5,000 |
| BL11SAH-C | 50 LB | BURGUNDY | 11.1" | .18" | .054" | 3" | 100 | 5,000 |
| BL14SAH-C | 50 LB | BURGUNDY | 14.6" | .18" | .054" | 4" | 100 | 5,000 |
| BL14LAH-C | 120 LB | BURGUNDY | 14.6" | .298" | .069" | 4" | 100 | 2,000 |

CABLE TIES - MILSPEC



FEATURES

- Operating temperature minimum 40°F to maximum 185°F
- Easy grab tip for pick up from flat surfaces
- Low insertion for quick installation
- High Yield Strength

APPLICATIONS

- Safely and easily secures wire bundles and harness components
- Screw mount cable ties allow cable bundles to be secured permanently to any surface
- Ideal for communication racks, walls, or ceilings

STANDARD MATERIAL

- Polyamide 6.6 UV Resistant (Outdoor)
- Polyamide 6.6 (Indoor)

CERTIFICATIONS

- Plenum AH2 Rated
- 50 & 120LB Series UL Type 21S
- Flammability rating UL 94-V2



| MILSPEC PART # | PART # | TENSILE STRENGTH (LBS.) | ENVIRONMENT | COLOR | LENGTH | WIDTH | THICKNESS | MAX. BUNDLE DIAMETER | BAG QTY. | CASE QTY. | WEIGHT/ CASE (LBS.) | |
|----------------|---------------------|-------------------------|------------------|----------|-----------------|--------|-----------|----------------------|----------|-----------|---------------------|-----|
| MS3367-4-9 | BL4M9-M-MILSPEC | 18 | INDOOR | NATURAL | 4.1" | 0.096" | 0.035" | 0.75" | 1,000 | 10,000 | 6.8 | |
| MS3367-5-9 | BL5I9-M-MILSPEC | 40 | | | 5.7" | 0.142" | 0.05" | 1.25" | 1,000 | 10,000 | 17 | |
| MS3367-1-9 | BL7S9-M-MILSPEC | 50 | | | 7.6" | 0.180" | 0.055" | 2.0" | 1,000 | 10,000 | 30 | |
| MS3367-7-9 | BL11S9-M-MILSPEC | 50 | | | 11.1" | 0.18" | 0.054" | 3.0" | 1,000 | 5,000 | 20 | |
| MS3367-2-9 | BL14S9-M-MILSPEC | 50 | | | 14.6" | 0.18" | 0.054" | 4.0" | 1,000 | 5,000 | 25 | |
| MS3367-3-9 | BL14L9-C-MILSPEC | 120 | | | 14.6" | 0.298" | 0.069" | 4.0" | 100 | 2,000 | 26 | |
| MS3367-10-9 | BL24H9-L-MILSPEC | 175 | | | 24.1" | 0.350" | 0.087" | 7.2" | 50 | 500 | 15 | |
| MS3367-13-9 | BL36H9-L-MILSPEC | 175 | | | 36" | 0.350" | 0.087" | 11.0" | 50 | 500 | 21.5 | |
| MS3367-4-(*) | BL4M(*)-M-MILSPEC | 18 | | | SEE TABLE BELOW | 4.1" | 0.096" | 0.035" | 0.75" | 1,000 | 10,000 | 6.8 |
| MS3367-5-(*) | BL5I(*)-M-MILSPEC | 40 | | | | 5.7" | 0.142" | 0.05" | 1.25" | 1,000 | 10,000 | 17 |
| MS3367-1-(*) | BL7S(*)-M-MILSPEC | 50 | | | | 7.6" | 0.180" | 0.055" | 2.0" | 1,000 | 10,000 | 30 |
| MS3367-7-(*) | BL11S(*)-M-MILSPEC | 50 | | | | 11.1" | 0.18" | 0.054" | 3.0" | 1,000 | 5,000 | 20 |
| MS3367-2-(*) | BL14S(*)-M-MILSPEC | 50 | | | | 14.6" | 0.18" | 0.054" | 4.0" | 1,000 | 5,000 | 25 |
| MS3367-3-(*) | BL14L(*)-C-MILSPEC | 120 | | | | 14.6" | 0.298" | 0.069" | 4.0" | 100 | 2,000 | 26 |
| MS3367-4-0 | BL4M0-M-MILSPEC | 18 | INDOOR / OUTDOOR | UV BLACK | | 4.1" | 0.096" | 0.035" | 0.75" | 1,000 | 10,000 | 6.8 |
| MS3367-5-0 | BL5I0-M-MILSPEC | 40 | | | 5.7" | 0.142" | 0.05" | 1.25" | 1,000 | 10,000 | 17 | |
| MS3367-1-0 | BL7S0-M-MILSPEC | 50 | | | 7.6" | 0.180" | 0.055" | 2.0" | 1,000 | 10,000 | 30 | |
| MS3367-7-0 | BL11S0-M-MILSPEC | 50 | | | 11.1" | 0.18" | 0.054" | 3.0" | 1,000 | 5,000 | 20 | |
| MS3367-2-0 | BL14S0-M-MILSPEC | 50 | | | 14.6" | 0.18" | 0.054" | 4.0" | 1,000 | 5,000 | 25 | |
| MS3367-3-0 | BL14L0-C-MILSPEC | 120 | | | 14.6" | 0.298" | 0.069" | 4.0" | 100 | 2,000 | 26 | |
| MS3367-10-0 | BL24H0-L-MILSPEC | 175 | | | 24.1" | 0.350" | 0.087" | 7.2" | 50 | 500 | 15 | |
| MS3367-13-0 | BL36H0-L-MILSPEC | 175 | | | 36" | 0.350" | 0.087" | 11.0" | 50 | 500 | 21.5 | |

*Insert number suffix for color

| SUFFIX | 1 | 2 | 3 | 4 | 5 | 6 | 7 | 8 |
|--------|-------|-----|--------|--------|-------|------|--------|------|
| COLOR | BROWN | RED | ORANGE | YELLOW | GREEN | BLUE | PURPLE | GRAY |

CABLE TIES

CABLE TIES - FIR TREE PUSH MOUNT



FEATURES

- Operating temperature minimum -40°F to maximum 221°F
- Easy grab tip for pick up from flat surfaces
- Provide a secure grip in mounting holes and protect against dirt and other impurities
- Easily inserted into a pre-drilled hole and locks into place

APPLICATIONS

- Safely and easily secures wire bundles and harness components
- Push-mount cable ties snap quickly into a hole to attach a bundle to another surface

STANDARD MATERIAL

- Polyamide 6.6 UV Resistant Heat Stabilized

CERTIFICATIONS

- Plenum AH2 Rated
- Flammability rating UL 94-V2



| PART # | TENSILE STRENGTH (LBS.) | ENVIRONMENT | COLOR | LENGTH | WIDTH | THICKNESS | MAX. BUNDLE DIAMETER | BAG QTY. | CASE QTY. | WEIGHT/CASE (LBS.) |
|-------------|-------------------------|------------------|---------------------------|--------|-------|-----------|----------------------|----------|-----------|--------------------|
| BL7SFTPM0-M | 50 | INDOOR / OUTDOOR | UV BLACK, HEAT STABILIZED | 7.6" | 0.18" | 0.055" | 2.0" | 1,000 | 5,000 | 30 |

CLAMP TIES

ADJUSTABLE AND RELEASABLE



FEATURES

- Large hang notch design
- Heavy duty carrying handle
- 360° rotating handle
- Easy release trigger
- Flexible tie design

APPLICATIONS

- Perfect for organizing, carrying or storing extension cords, conduit, hoses, booster cables and more

| PART # | TENSILE STRENGTH (LBS.) | COLOR | MAX. BUNDLE DIAMETER | CASE QTY. | WEIGHT/CASE (LBS.) |
|----------|-------------------------|-------|----------------------|-----------|--------------------|
| 58299240 | 50 | BROWN | 2.0" | 25 | 5.9 |
| 58299340 | 100 | | 3.0" | 25 | 8.9 |
| 58299440 | 150 | | 4.0" | 20 | 10.5 |
| 58973240 | 50 | GREEN | 2.0" | 25 | 8.5 |
| 58973340 | 100 | | 3.0" | 25 | 9.5 |
| 58973440 | 150 | | 4.0" | 20 | 11.5 |

CABLE TIE MOUNTS WITH ADHESIVE



FEATURES

- Operating temperature minimum -40°F to maximum 185°F
- Apply with adhesive base or screw
- 4-way entry style

APPLICATIONS

- For safe organization of cables

STANDARD MATERIAL

- Polyamide 6.6 UV Resistant (Outdoor)
- Polyamide 6.6 (Indoor)

CERTIFICATIONS

- Plenum AH2 Rated
- Flammability rating UL 94-V2
- UL Recognized

| PART # | ADHESIVE TYPE | COLOR | LENGTH | WIDTH | THICKNESS | MIN. BUNDLE DIAMETER | SCREW SIZE | BAG QTY. | CASE QTY. | WEIGHT/ CASE (LBS.) |
|-----------|---------------|----------|--------|-------|-----------|----------------------|------------|----------|-----------|---------------------|
| BRMPM9-C | RUBBER | NATURAL | 3/4" | 3/4" | 0.1875" | 0.165" | 0.162" | 100 | 1,000 | 3.8 |
| BRMPS9-C | | | 1" | 1" | 0.198" | 0.220" | 0.210" | 100 | 1,000 | 3.8 |
| BRMPM0-C | | UV BLACK | 3/4" | 3/4" | 0.1875" | 0.165" | 0.162" | 100 | 1,000 | 3.8 |
| BRMPS0-C | | | 1" | 1" | 0.198" | 0.220" | 0.210" | 100 | 1,000 | 3.8 |
| BRMPMA9-C | ACRYLIC | NATURAL | 3/4" | 3/4" | 0.1875" | 0.165" | 0.162" | 100 | 1,000 | 3.8 |
| BRMPMA9-C | | | 1" | 1" | 0.198" | 0.220" | 0.210" | 100 | 1,000 | 3.8 |
| BRMPMA0-C | | UV BLACK | 3/4" | 3/4" | 0.1875" | 0.165" | 0.162" | 100 | 1,000 | 3.8 |
| BRMPMA0-C | | | 1" | 1" | 0.198" | 0.220" | 0.210" | 100 | 1,000 | 3.8 |

| PART # | ADHESIVE TYPE | COLOR | LENGTH | WIDTH | THICKNESS | MIN. BUNDLE DIAMETER | SCREW SIZE | BAG QTY. | CASE QTY. | WEIGHT/ CASE (LBS.) |
|-----------|---------------|----------|--------|-------|-----------|----------------------|------------|----------|-----------|---------------------|
| BLMPM9-C | RUBBER | NATURAL | 3/4" | 3/4" | 0.1875" | 0.165" | 0.162" | 100 | 10,000 | 38 |
| BLMPS9-C | | | 1" | 1" | 0.198" | 0.220" | 0.210" | 100 | 5,000 | 19 |
| BLMPM0-C | | UV BLACK | 3/4" | 3/4" | 0.1875" | 0.165" | 0.162" | 100 | 10,000 | 38 |
| BLMPS0-C | | | 1" | 1" | 0.198" | 0.220" | 0.210" | 100 | 5,000 | 19 |
| BLMPMA9-C | ACRYLIC | NATURAL | 3/4" | 3/4" | 0.1875" | 0.165" | 0.162" | 100 | 10,000 | 38 |
| BLMPMA9-C | | | 1" | 1" | 0.198" | 0.220" | 0.210" | 100 | 5,000 | 19 |
| BLMPMA0-C | | UV BLACK | 3/4" | 3/4" | 0.1875" | 0.165" | 0.162" | 100 | 10,000 | 38 |
| BLMPMA0-C | | | 1" | 1" | 0.198" | 0.220" | 0.162" | 100 | 5,000 | 19 |

CABLE TIES



Southwire™

CABLE TIES

CATALOG

get social with us:



[/SOUTHWIRETOOLS](#)



[/SOUTHWIRE-COMPANY](#)



[@SOUTHWIRETOOLS](#)



[@SOUTHWIRE](#)



SCAN TO LEARN MORE

WWW.SOUTHWIRE.COM | 1-855-SWTTOOLS

All Trademarks or Registered Trademarks (TM/®) are owned or licensed by Southwire Company.
Any other TM/®- Trademark or Registered Trademark of Southwire Company.